



LEVEL 1 FLOOR PLAN



- ROOM LEGEND

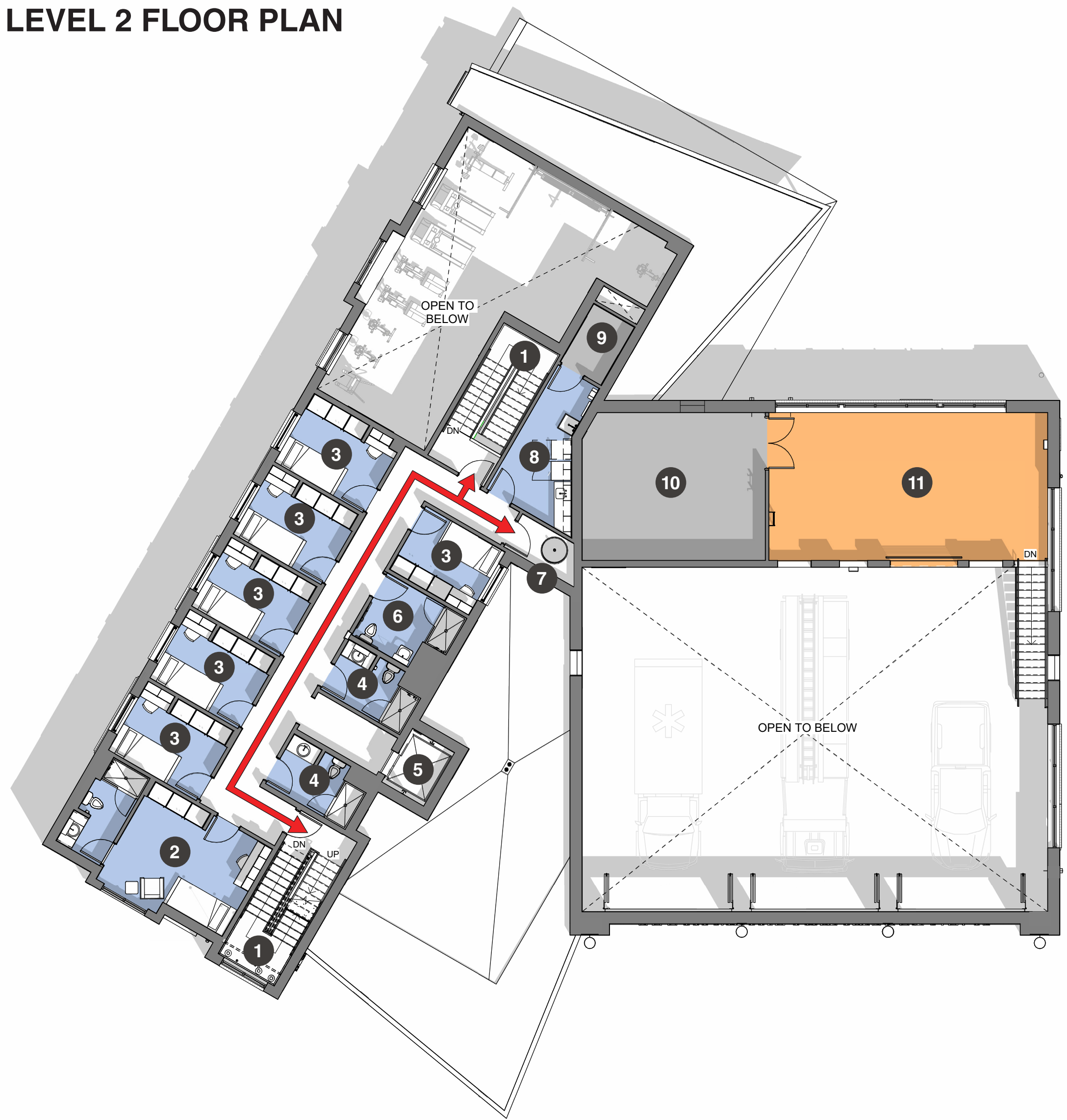
 - ENTRY (PUBLIC)
 - STAIR TO LEVEL 2
 - DAYROOM/KITCHEN / DINING
 - FITNESS
 - STORAGE
 - OUTDOOR FITNESS PATIO
 - OUTDOOR DINING PATIO
 - ENTRY (FIREFIGHTERS)
 - JANITOR CLOSET
- SLIDE POLE (POSITIVE PRESSURE)

 - OFFICE
 - TOILET RM
 - EMS STORAGE
 - ELEVATOR
 - EMS OFFICE
 - CREW / WATCH OFFICE
 - POSITIVE PRESSURE CORRIDOR
- APPARATUS BAY

 - SHOP / MAINT / STORAGE
 - WATER ENTRY / SPRINKLER
 - BUNKER GEAR
 - UNDRESSING
 - DECON BATH / DRESSING
 - DECON GEAR / LAUNDRY
- ADMINISTRATIVE

 - APPARATUS BAY
 - APPARATUS BAY SUPPORT
 - DECON
 - LIVING AREA
 - BUILDING SUPPORT / MEP
 - CIRCULATION
- CLEAR / DIRECT CIRCULATION CORRIDORS

LEVEL 2 FLOOR PLAN



- ROOM LEGEND

 - STAIR TO LEVEL 1
 - OFFICER'S SUITE
 - BEDROOM
 - BATHROOM
 - ELEVATOR
 - ACCESSIBLE BATHROOM
- SLIDE POLE (POSITIVE PRESSURE)

 - LAUNDRY
 - DATA / IT ROOM
 - MECH / ELEC ROOM
 - TRAINING MEZZANINE
- APPARATUS BAY SUPPORT

 - LIVING AREA
 - BUILDING SUPPORT / MEP
 - CIRCULATION
- CLEAR / DIRECT CIRCULATION CORRIDORS

SITE PLAN



SIZE

11,460 sf

YEAR COMPLETED

2025

SCHEDULE

03/2022 - 04/2025

COST

\$8.7M

SERVICES

Feasibility
Planning
Architecture
Interiors
Energy Modeling

South Metro Fire Rescue Station No. 15 was designed to meet a rigorous set of program requirements that support the evolving operational demands of a modern fire department.

The station accommodates three shifts of six firefighters each, providing three apparatus bays and incorporating key amenities: such as communal living areas, individually climate-controlled sleeping quarters, specialized decontamination facilities, operations support spaces and full fire suppression systems. Committed to longevity, the building adheres to a 75-year materials and quality standard, ensuring durability and lasting value for the department. The design team responded to these criteria by developing a two-story structure that seamlessly maximizes functionality, durability, and operational efficiency for the first responders who work there.

A notable challenge was the station's parallelogram-shaped site, which barely accommodated the original station. The design team transformed the site restrictions into strengths while still maintaining a focus on results geared toward functionality, first responder well-being, and health and safety protocols. Finally, the station's design boldly asserts its civic presence with a two-story form, prominent red bay doors, and a modern tower, emphasizing it as a community landmark.

