

Davenport Fire Station No. 3

Davenport Fire Department



Firefighter Well-being & Community Connection

A new fire station that is strategically sited in an underdeveloped northern gateway to a mid-size Midwestern city reduces response times and establishes a civic presence while also putting fire fighters' physical and mental wellness at the forefront.

The two-story, 18,740-square-foot building stretches east-west between two of the city's busiest one-way north and south arterial roads. The design is a modern reflection of the city's historic fire station that creates a catalyst for development in the area. Off-white brick replaces the historic red brick to complement the wood that is used to warm the façade and connect to the exposed wood roof deck in the apparatus bays, second-level terrace, and interior living areas.

The building massing is anchored on the east by the two-story apparatus bay and its single slope roof which opens to the south to create a double-height glass façade, maximizing daylight and establishing a strong community connection. It is balanced on the west by another double-height glass façade at the public areas on the first floor and the fire fighter's living areas on the second floor. The full-height glass and an exterior deck all offer direct connection to the outdoors and daylighting that reinforces circadian rhythms as well as the seasonal changes.

Strategic sequencing of spaces, including a decontamination clean room between the bays and the rest of the building, mitigate exposure to fire and ash carcinogens through physical decontamination procedures as well as strategic sequencing of air pressurization to ensure contaminants are kept out of station clean zones, supporting firefighter's health.

The floor plan also strategically separates public areas from those used exclusively by fire fighters. On the first floor, a training room, conference room, police department drop-in room, and workout room are all frequently used by other city staff. Only the department has access to the bays, decontamination areas, and the living areas and department offices on the second level.

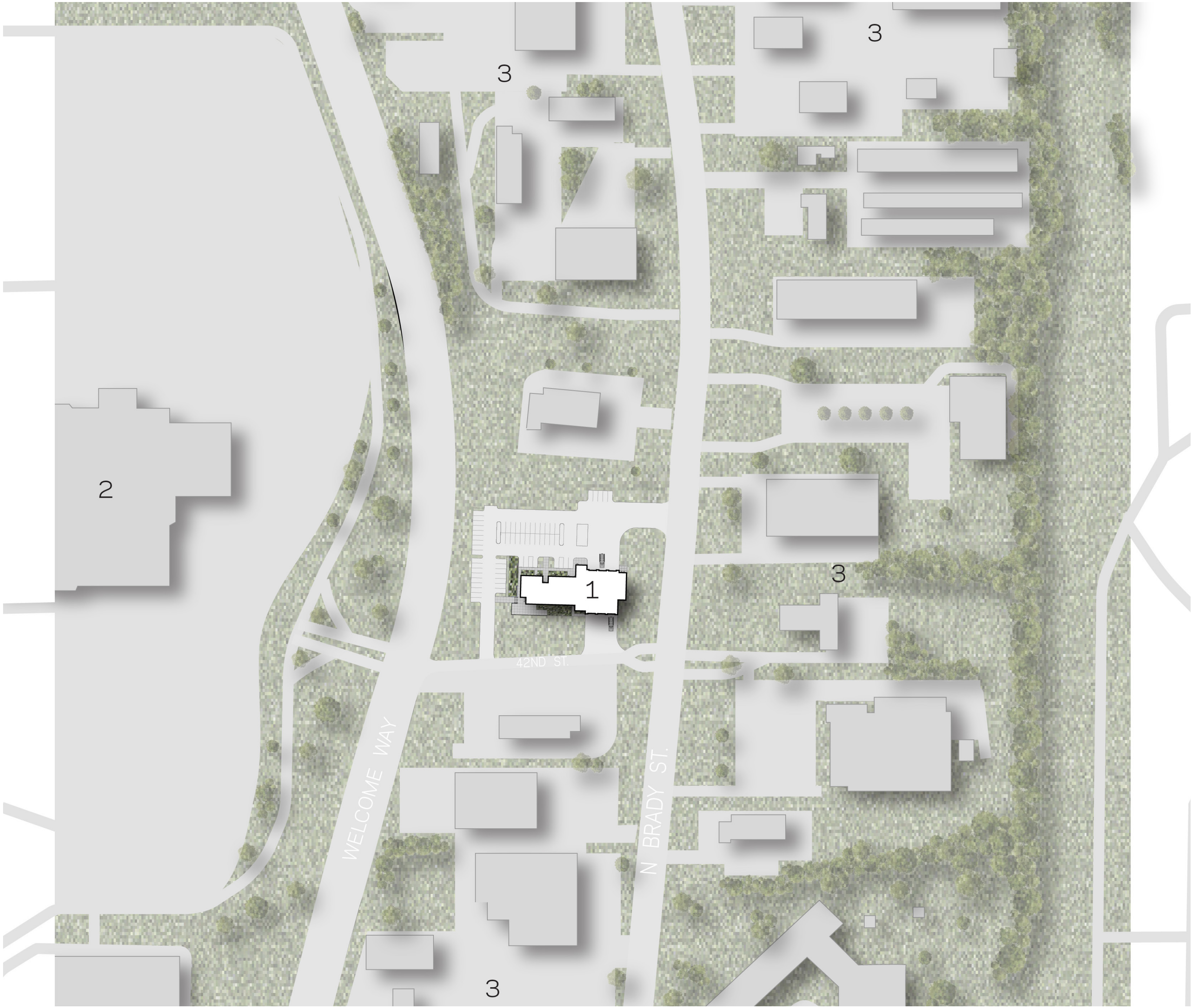
Multiple spaces serve dual functions. The space above the support areas in the apparatus bays creates an area for training while the hose drying tower also doubles as a technical training stair. The community room doubles as an ICC-500 rated storm shelter and, along with the conference room, is frequently used by community and city groups for training and meetings. A police workstation next to the fitness room saves officers from traveling downtown to take care of paperwork or use the fitness facility.

The living areas include a full kitchen, a large family-style table, and a TV and gaming area to ensure the firefighters have a variety of areas to relax and recharge.

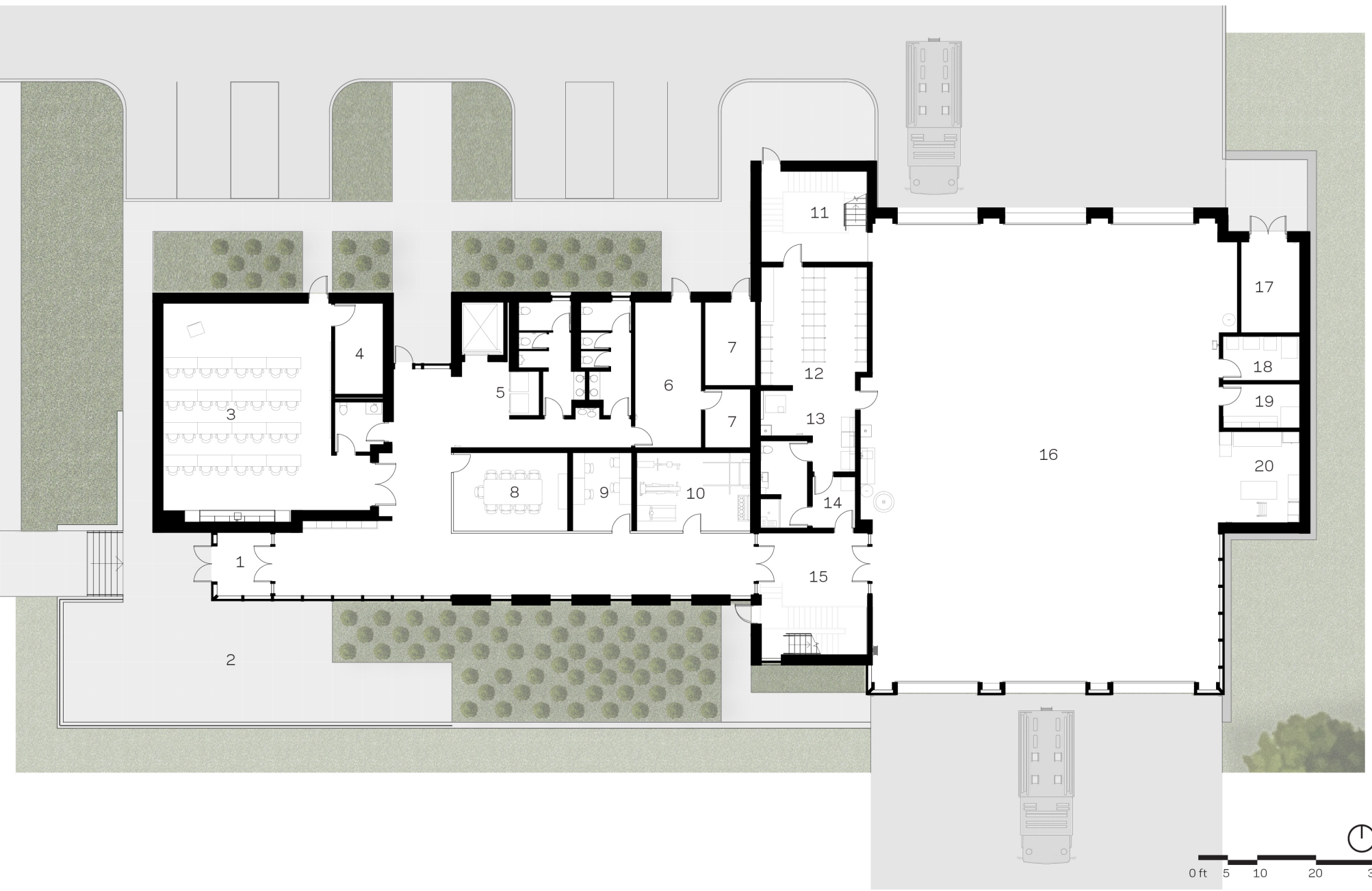
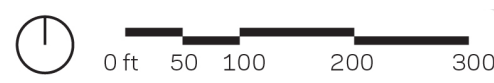
Preference throughout the facility was given to healthy and locally or regionally produced materials. An exposed wood structural roof deck, instead of metal, reduces embodied carbon and environmental impacts.

The transparency of the façade creates a civic presence by displaying the work done within by the city's first responders while also connecting them to the community they serve.

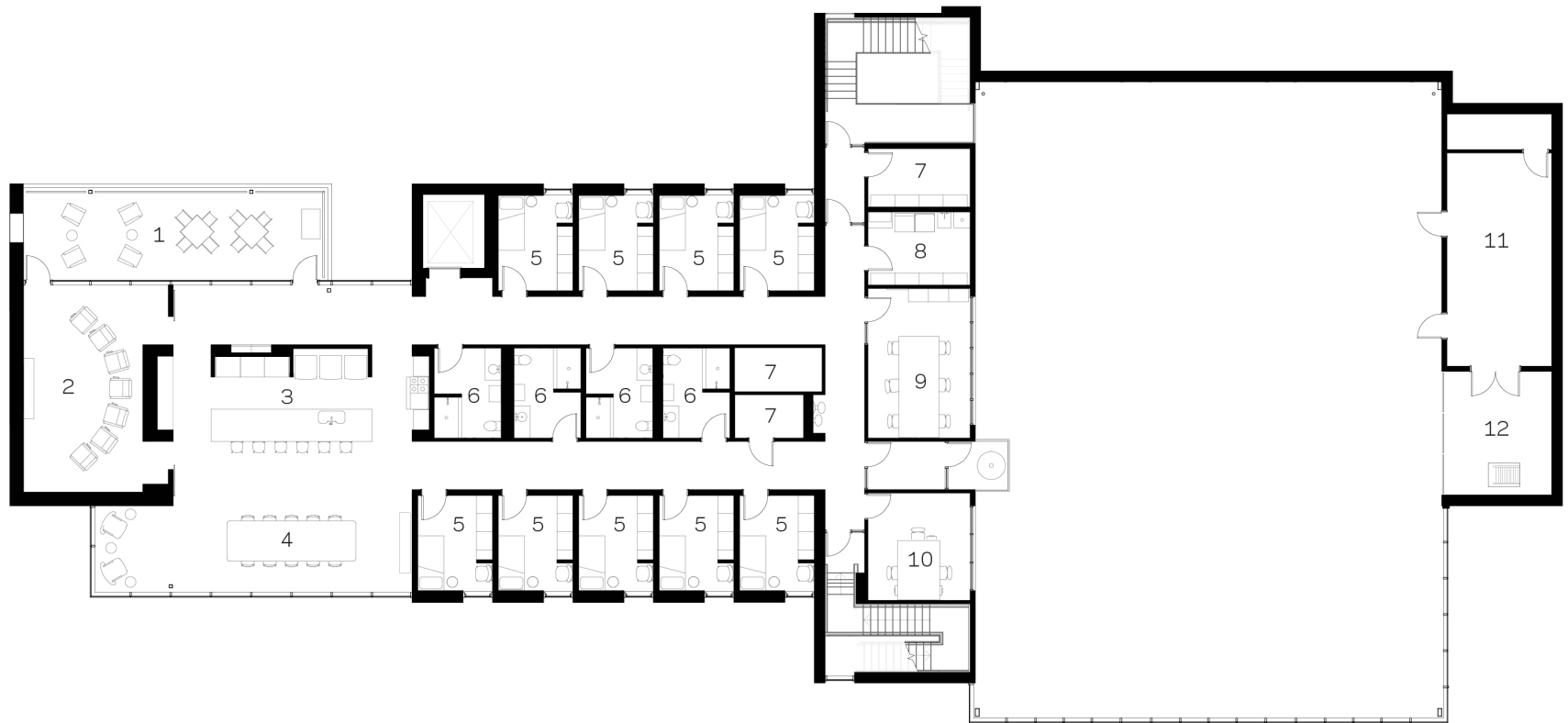




1 Davenport Fire Station No. 3 2 North Park Mall 3 Commercial Zoning



- 1 Entry
- 2 Patio
- 3 Training Room
- 4 Storage
- 5 Vending
- 6 Water/IT
- 7 Mechanical
- 8 Conference Room
- 9 Reports
- 10 Fitness Room
- 11 Training Stair
- 12 Turnout/Gear Storage
- 13 Dirty Room
- 14 Clean Room
- 15 Air Lock
- 16 Apparatus Bay
- 17 Outdoor Storage
- 18 Air Room
- 19 Medical
- 20 Workshop



- 1 Roof Terrace
- 2 Lounge
- 3 Kitchen
- 4 Dining
- 5 Dorm
- 6 Restroom
- 7 Utility
- 8 Laundry/Storage
- 9 Captain's Office
- 10 District Chief Office
- 11 Training Mezzanine
- 12 Simulation Room