



CITY OF GREENFIELD NEW FIRE HEADQUARTERS

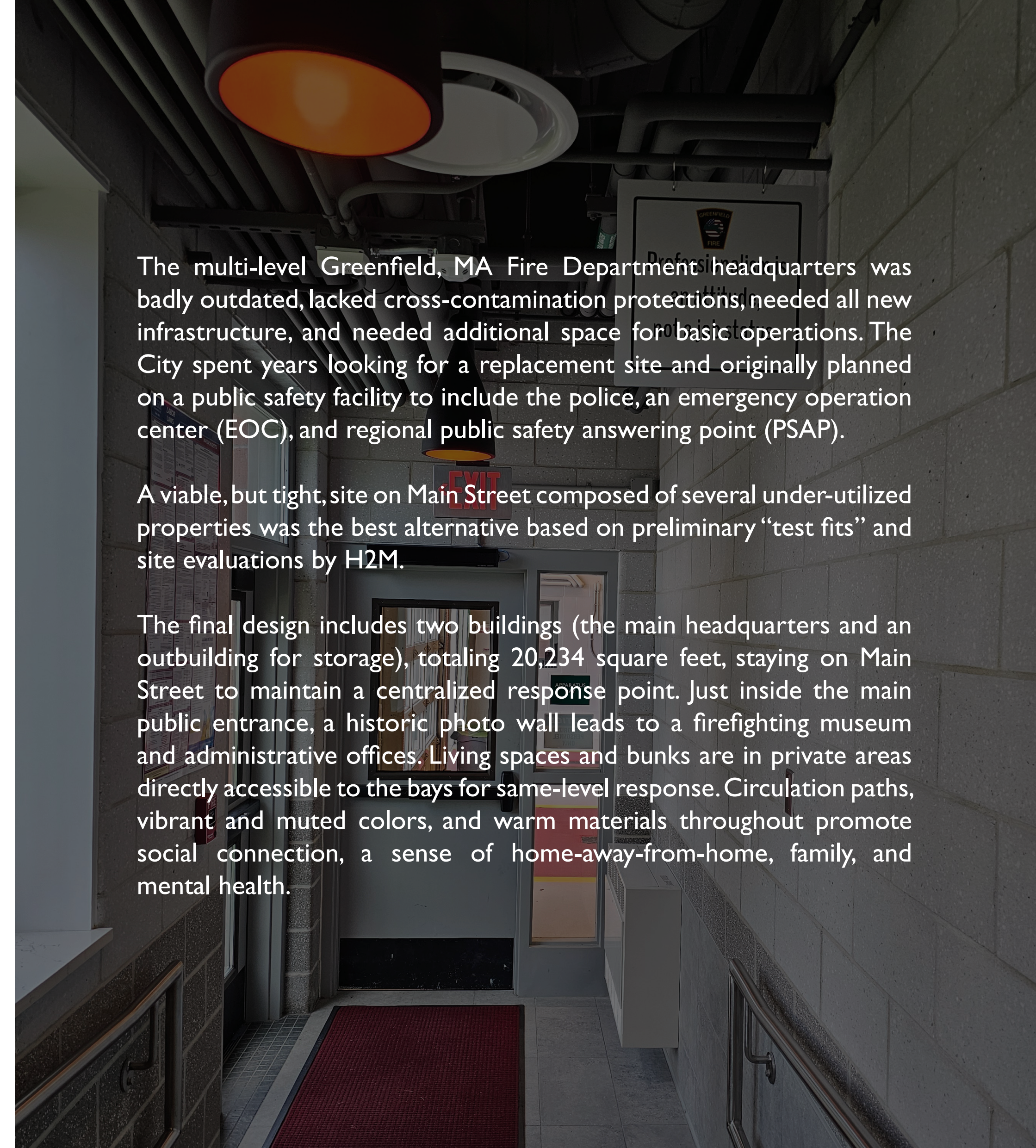
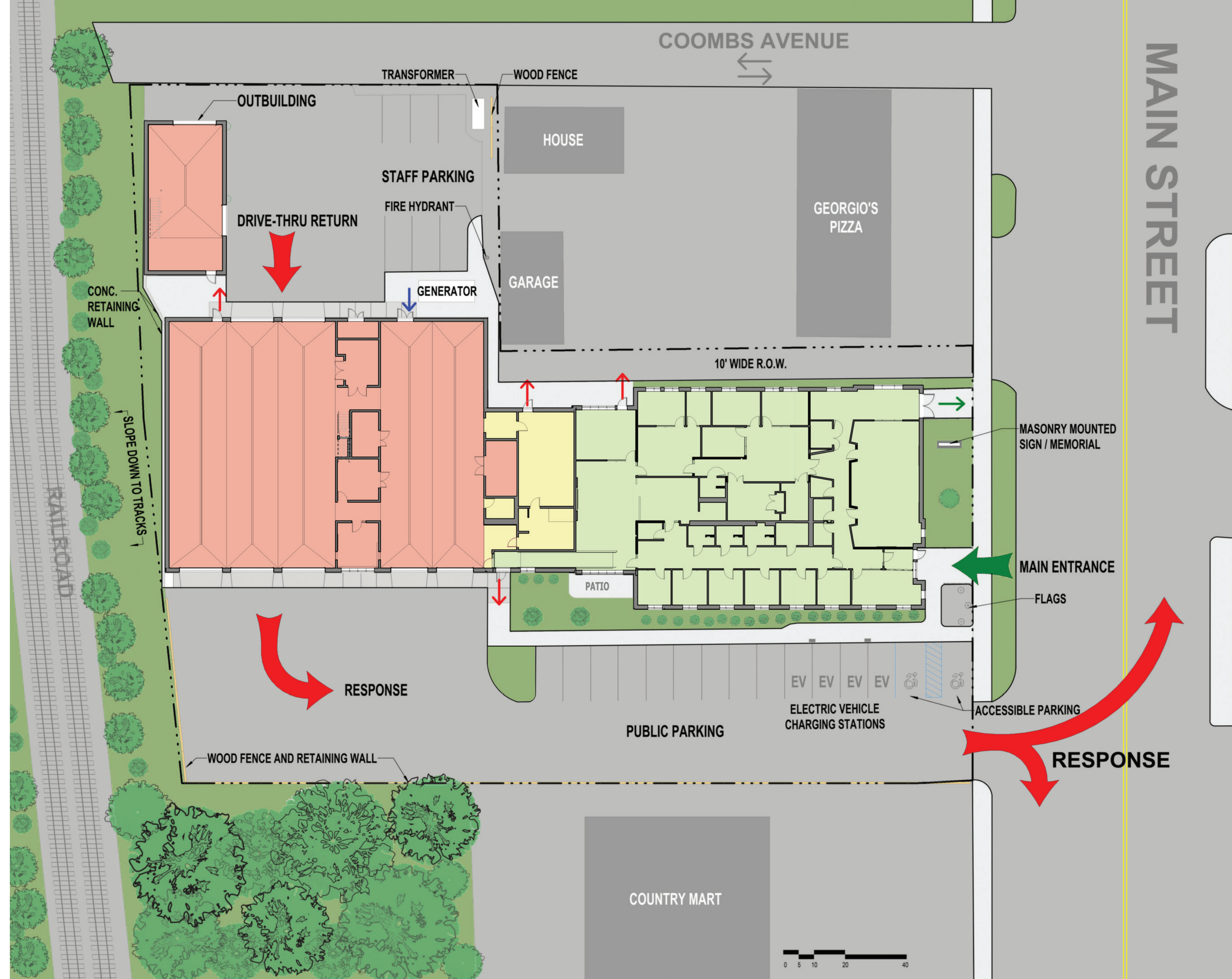
GREENFIELD, MASSACHUSETTS

H 2 architects
+ engineers
M

PROJECT DATA

PROJECT NAME: CITY OF GREENFIELD
NEW FIRE HEADQUARTERS
AGENCY TYPE: MUNICIPAL FIRE SERVICE
DEPARTMENT: GREENFIELD FIRE DEPARTMENT
LOCATION: GREENFIELD, MA
COMPLETED: MAY 2024
SQUARE FOOTAGE: 20,234 SQ. FT.
SITE SIZE: 1.079 ACRES
TOTAL COST: \$14.9 MILLION





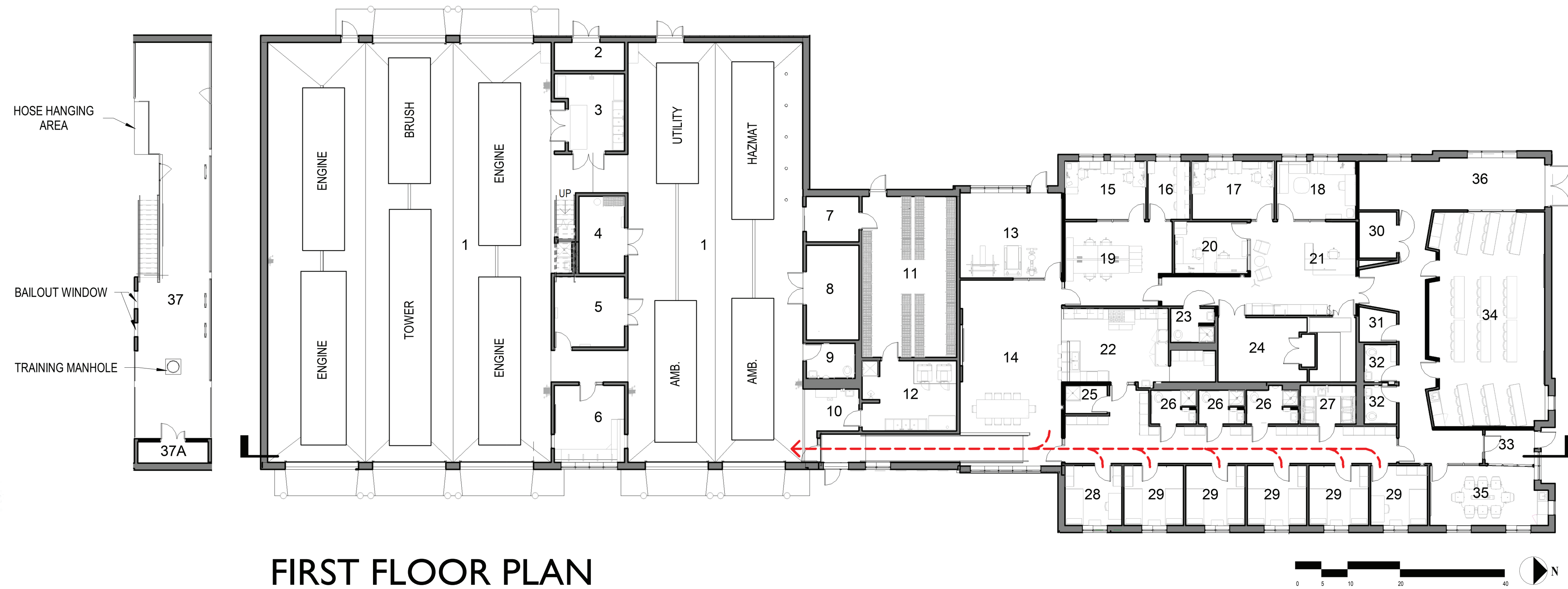
The multi-level Greenfield, MA Fire Department headquarters was badly outdated, lacked cross-contamination protections, needed all new infrastructure, and needed additional space for basic operations. The City spent years looking for a replacement site and originally planned on a public safety facility to include the police, an emergency operation center (EOC), and regional public safety answering point (PSAP).

A viable, but tight, site on Main Street composed of several under-utilized properties was the best alternative based on preliminary "test fits" and site evaluations by H2M.

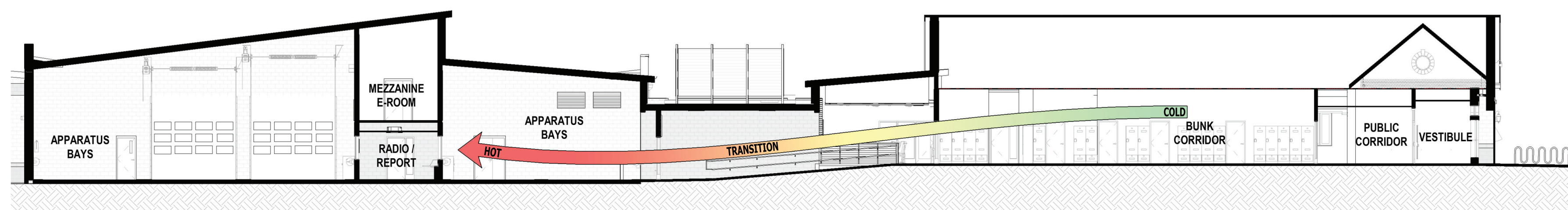
The final design includes two buildings (the main headquarters and an outbuilding for storage), totaling 20,234 square feet, staying on Main Street to maintain a centralized response point. Just inside the main public entrance, a historic photo wall leads to a firefighting museum and administrative offices. Living spaces and bunks are in private areas directly accessible to the bays for same-level response. Circulation paths, vibrant and muted colors, and warm materials throughout promote social connection, a sense of home-away-from-home, family, and mental health.

LEGEND

- 1 APPARATUS BAYS
- 2 OUTDOOR STORAGE
- 3 SCBA
- 4 EMS STORAGE
- 5 WORK ROOM
- 6 RADIO/REPORT
- 7 HOSE ROOM
- 8 STORAGE ROOM
- 9 BAY BATHROOM
- 10 TRANSITION ZONE
- 11 TURNOUT GEAR
- 12 DECON
- 13 EXERCISE
- 14 DAY ROOM
- 15 OFFICER'S OFFICE
- 16 STUDY/UNION OFFICE
- 17 FIRE INVEST. AND PREVENTION OFFICE
- 18 CHIEF'S OFFICE
- 19 BULLPEN
- 20 DEPUTY CHIEF'S OFFICE
- 21 ADMIN/WAITING AREA
- 22 KITCHEN
- 23 OFFICE BATHROOM
- 24 ELECTRICAL ROOM
- 25 JAN/HIC
- 26 BUNK BATHROOM
- 27 LAUNDRY
- 28 OFFICER'S BUNK
- 29 DOUBLE BUNK
- 30 TRAINING ROOM STORAGE
- 31 I.T.
- 32 PUBLIC BATHROOM
- 33 VESTIBULE
- 34 TRAINING ROOM
- 35 CONFERENCE
- 36 MUSEUM
- 37 MEZZANINE



FIRST FLOOR PLAN



LONGITUDINAL SECTION