



VIEW OF THE FIRE STATION FROM COMMERCIAL 10TH STREET

# STEAMBOAT SPRINGS FIRE RESCUE STATION



## PROJECT DETAILS

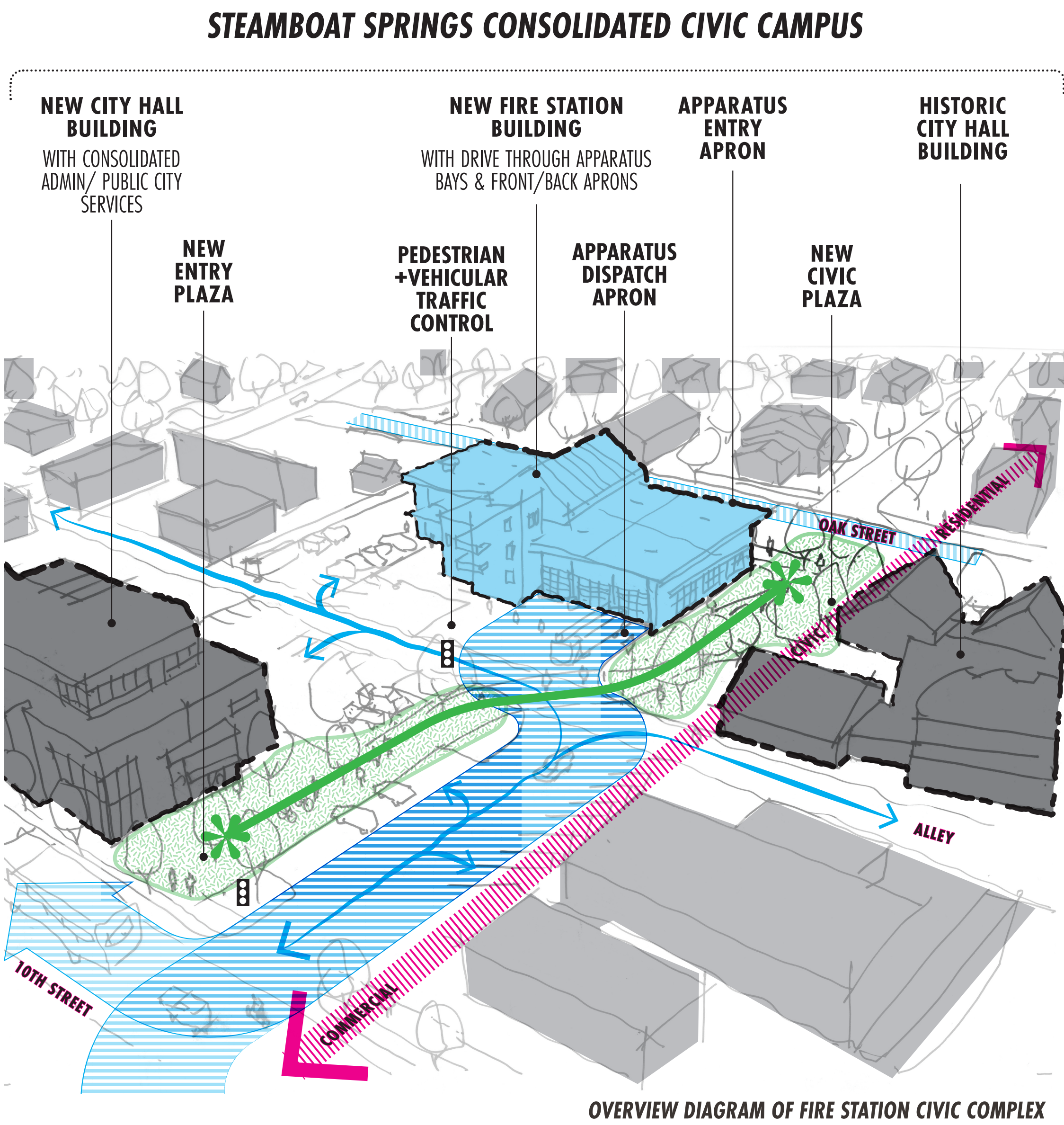
**Size** - 17,500 sf  
**Completion Date** - December 2024  
**Construction Cost** - \$17.5 Million  
**Location** - Steamboat Springs, Colorado  
**CLIENT** - City of Steamboat Springs

*A Downtown landmark, a symbol of advanced public safety, dedicated to rapid response, firefighter health, and community well-being*

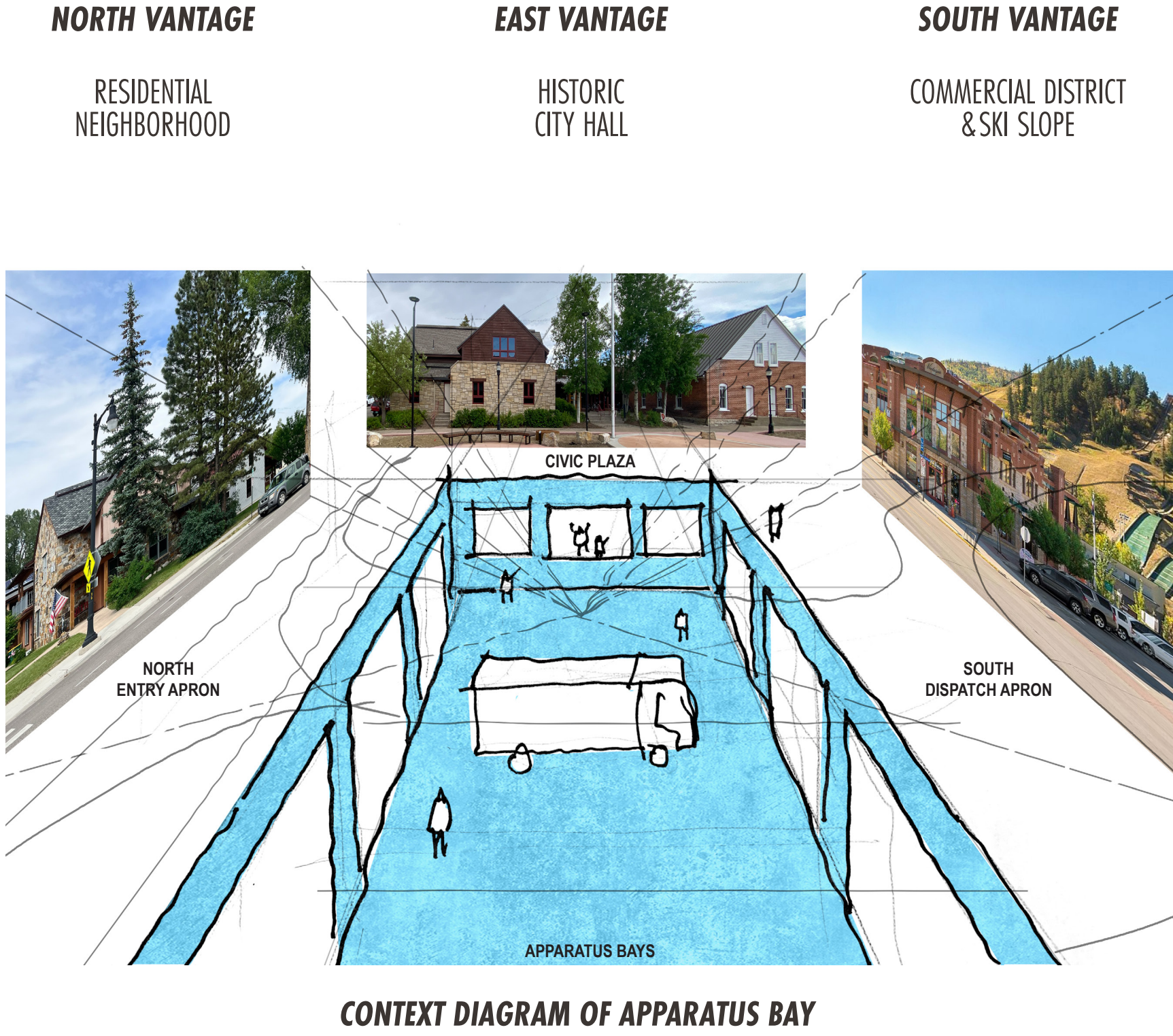
## PROGRAM SUMMARY

Nestled within the vibrant heart of Historic Downtown Steamboat Springs, the new 17,500 square foot Fire Station #1 stands as a beacon of public safety. This facility forms part of a consolidated civic campus, alongside the Historic City Hall and a new City Hall building designed to support the growing demands on city services. With community engagement as a core value, the civic campus thoughtfully integrates a Civic Plaza, designed to enrich the city's vibrant and celebratory spirit. Effective management of pedestrians, vehicles, and emergency traffic required careful integration of traffic control, Fire Station dispatch, and landscape design.

Designed to enhance operational readiness, the Station's apparatus side includes three double-deep drive-through bays, allowing for convenient cab inspections and supported by a deep dispatch apron for rapid deployment. To safeguard firefighter health and optimize operational efficiency, the apparatus bay's support spaces, such as the PPE storage, SCBA maintenance, and DECON rooms, are meticulously designed to align with the Fire department's operational sequence and uphold stringent air quality standards throughout the facility.

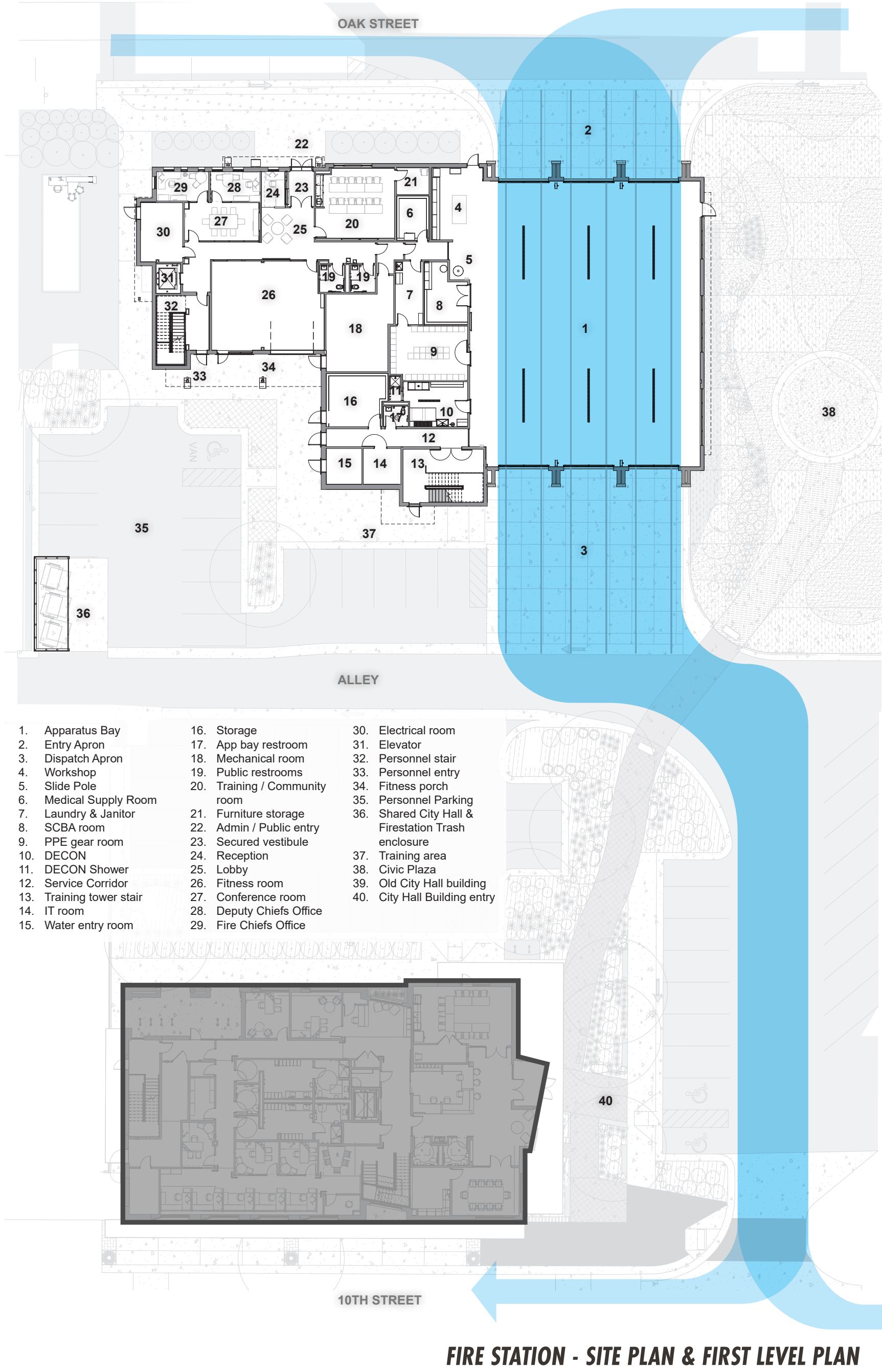


OVERVIEW DIAGRAM OF FIRE STATION CIVIC COMPLEX

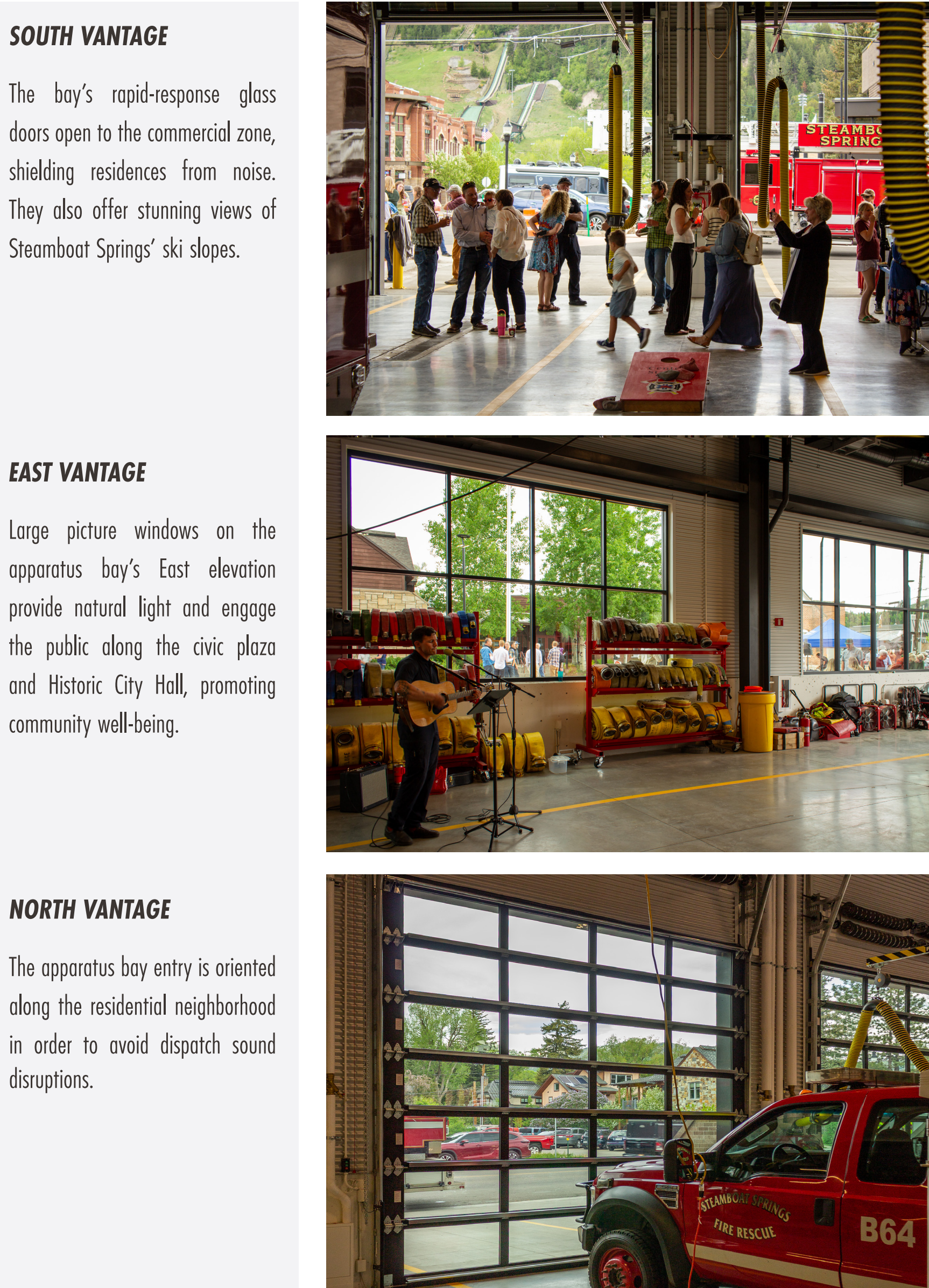


CONTEXT DIAGRAM OF APPARATUS BAY

*Strategic placement of the apparatus bay ensures minimal noise for neighbors, while its design invites community interaction and honors the city's history.*



FIRE STATION - SITE PLAN & FIRST LEVEL PLAN



SOUTH VANTAGE

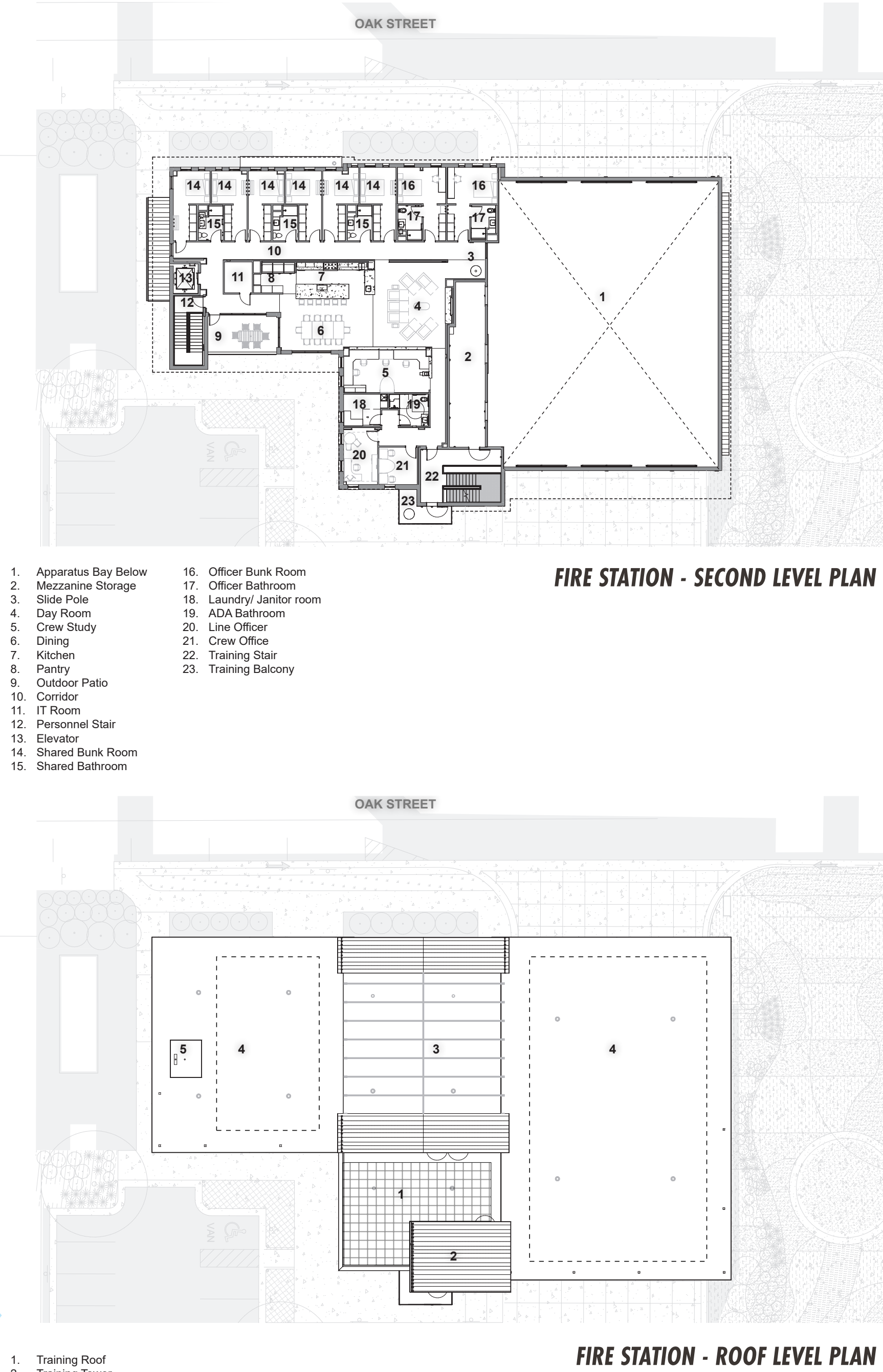
The bay's rapid-response glass doors open to the commercial zone, shielding residences from noise. They also offer stunning views of Steamboat Springs' ski slopes.

EAST VANTAGE

Large picture windows on the apparatus bay's East elevation provide natural light and engage the public along the civic plaza and Historic City Hall, promoting community well-being.

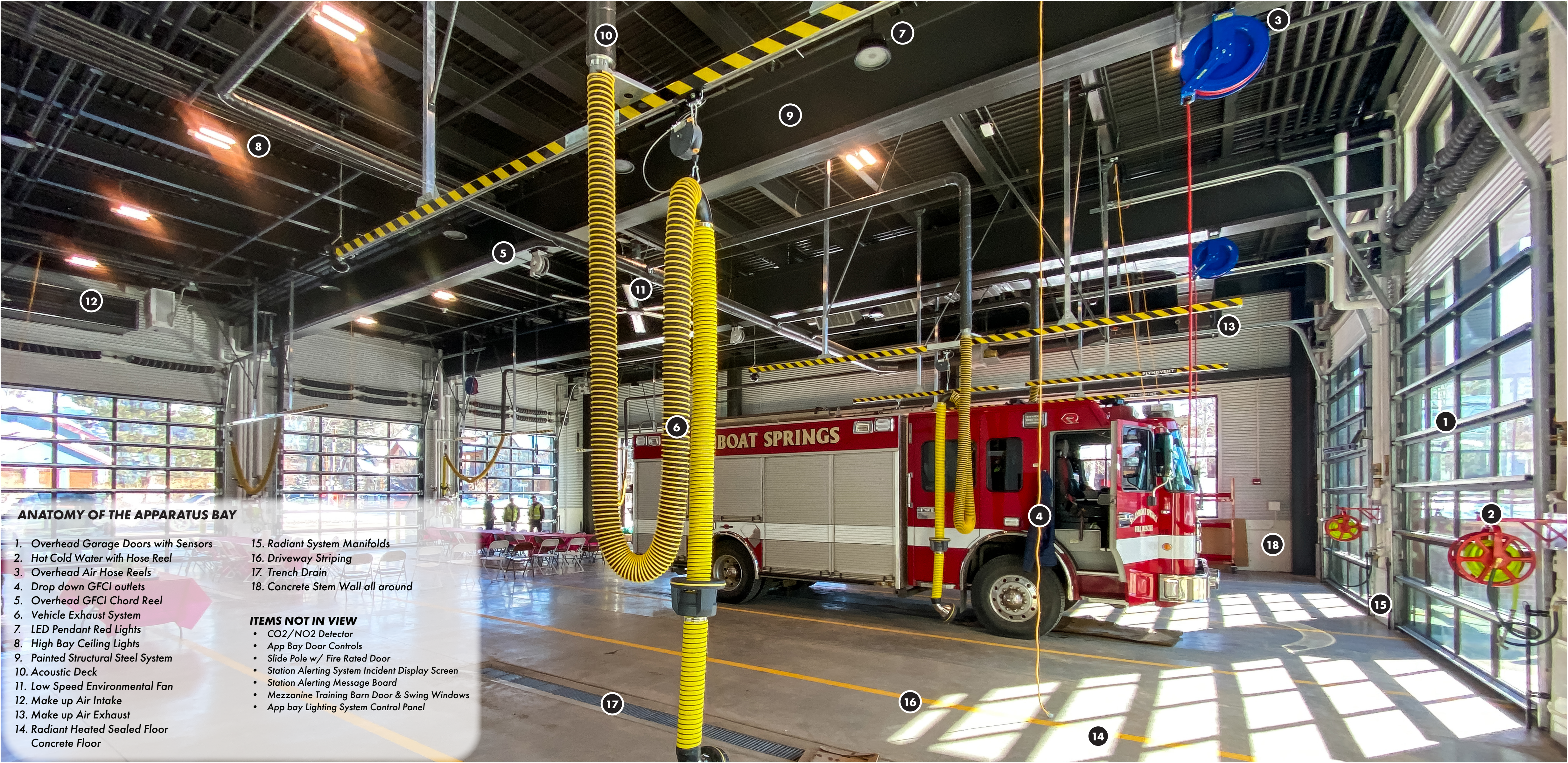
NORTH VANTAGE

The apparatus bay entry is oriented along the residential neighborhood in order to avoid dispatch sound disruptions.



FIRE STATION - SECOND LEVEL PLAN

FIRE STATION - ROOF LEVEL PLAN



**ANATOMY OF THE APPARATUS BAY**

1. Overhead Garage Doors with Sensors

2. Hot Cold Water with Hose Reel

3. Overhead Air Hose Reels

4. Drop down GFCI outlets

5. Overhead GFCI Chord Reel

6. Vehicle Exhaust System

7. LED Pendant Red Lights

8. High Bay Ceiling Lights

9. Painted Structural Steel System

10. Acoustic Deck

11. Low Speed Environmental Fan

12. Make up Air Intake

13. Make up Air Exhaust

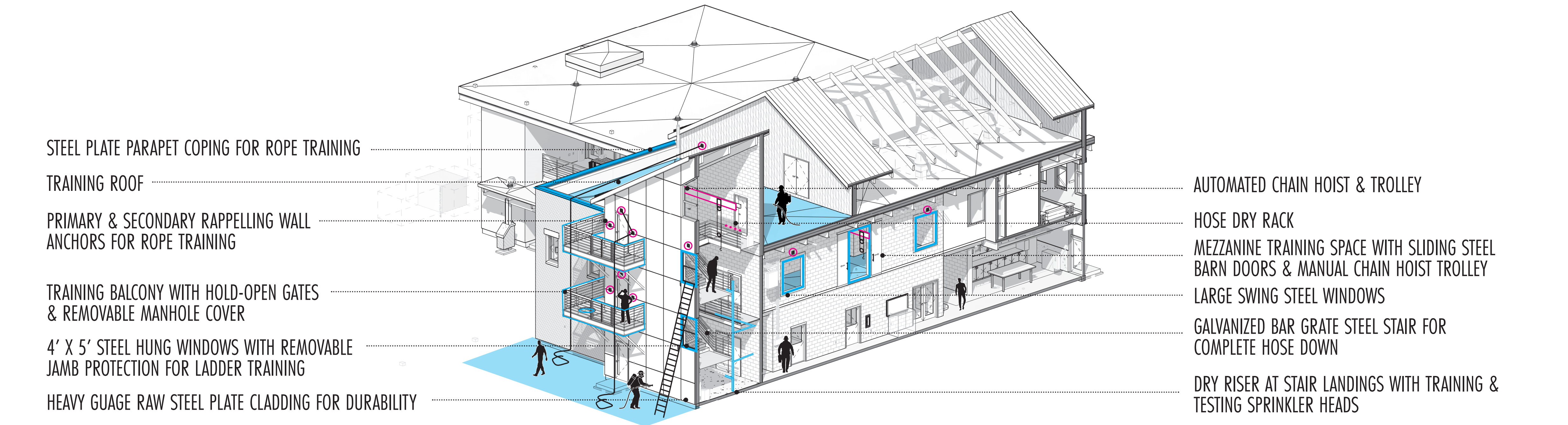
14. Radiant Heated Sealed Floor Concrete Floor
15. Radiant System Manifolds

16. Driveway Striping

17. Trench Drain

18. Concrete Stem Wall all around
- ITEMS NOT IN VIEW**

- CO<sub>2</sub>/N<sub>2</sub> Detector
  - App Bay Door Controls
  - Slide Pole w/ Fire Rated Door
  - Station Alerting System Incident Display Screen
  - Station Alerting Message Board
  - Mezzanine Training Barn Door & Swing Windows
  - App bay Lighting System Control Panel



**TRAINING FEATURES INTEGRATED WITHIN THE BUILDING**



360 Rotating 1000lbs Training Wall Anchors



Training Tower Showing Balconies With Swing Gates, Wall Anchors & Training Windows



Mezzanine Training Window With Training Anchors

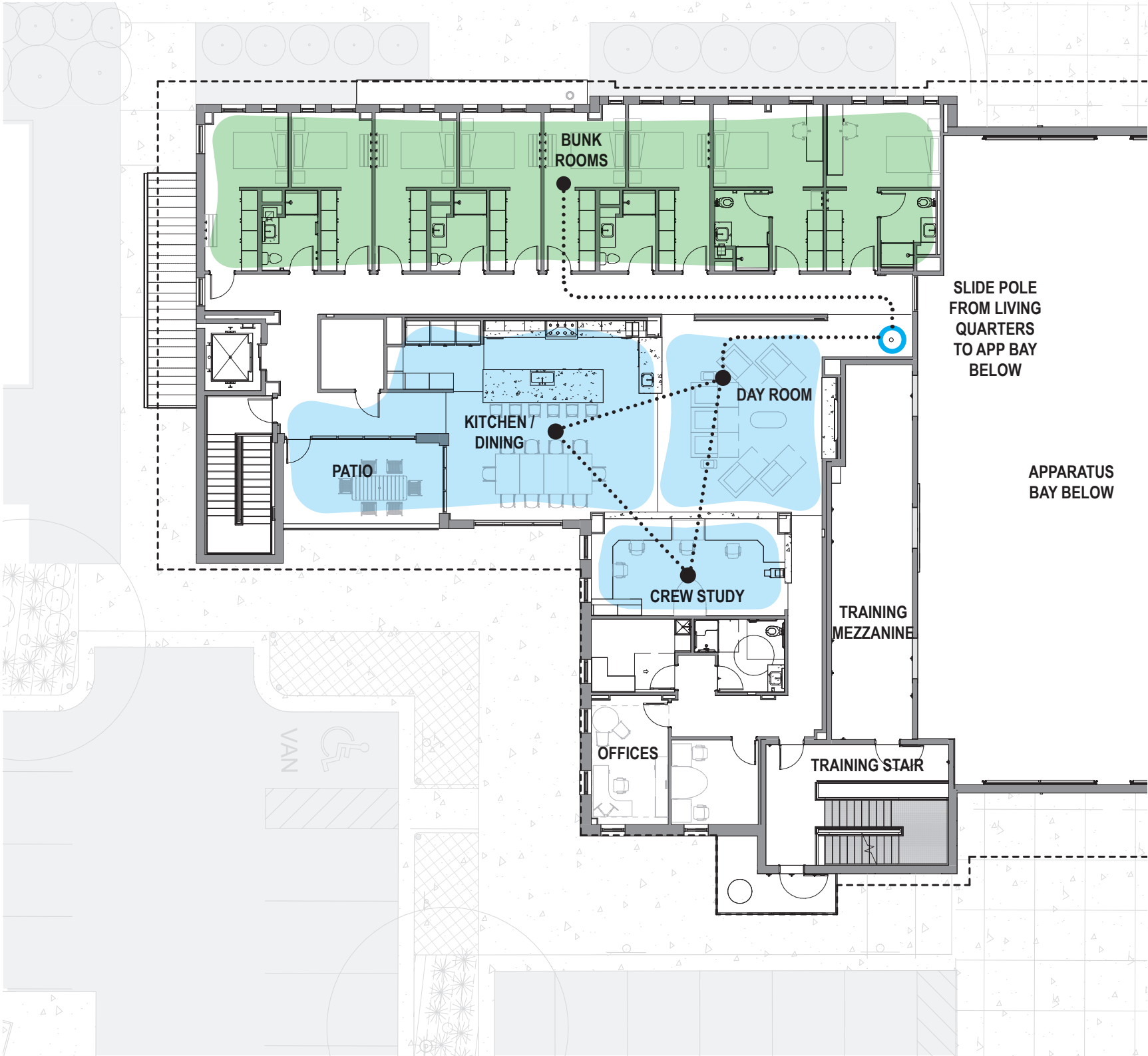


Training Balcony Floor Manhole



Barndoor, Swing Windows & Chain Hoist Into App Bay Mezzanine Training

*This fire station's residential-inspired design prioritizes firefighter well-being and faster response through strategically planned living quarters and integrated alerting*



**CREW STUDY**

This workspace is designed with an intent to encourage collaboration and team building through its adjacency to the living spaces.



**KITCHEN & DINING**

Serving as the station's social center, the spacious kitchen, pantry, and dining area open into the Day Room and crew study.



**DAY ROOM**

Designed for firefighter well-being and faster response, this recreational hub features lounge seating, a media system, and station alerting.



*Featuring a customizable training tower and two levels for administration, fitness, and firefighter living. Designed for well-being, it ensures fast responses and a supportive home environment.*

Directly adjacent to the apparatus bay, a training tower provides a customizable environment for comprehensive ladder, rescue, and fire suppression drills. The training features were carefully designed to the Fire Department Training needs. Portion of the training program extends into the Apparatus Bay mezzanine and opens into the space through large steel barn doors and steel swing windows.

The other half of the building is thoughtfully designed across two levels. On the first level, Fire Department Administration is readily accessible to the public through a dedicated north entrance, while a fitness room offers convenient access to a south patio. The upper level is dedicated to the living quarters and some fire department offices, ensuring both functionality and firefighter comfort.

The living quarters function as a supportive "second home," designed to promote firefighter well-being and enable swift response. Key features include private bunk rooms with generous locker storage, a kitchen, pantry, dining area, dayroom, crew study, laundry, and offices. Circadian rhythms are preserved through integrated alerting and lighting systems, while access to daylight and outdoor spaces provides essential avenues for rest and rejuvenation.

