

TARGETS:  
LEED GOLD  
EUI = 75

MINIMAL FOSSIL FUELS IN GENERATOR, GAS GRILL

BIO-SOLAR ROOF: PHOTOVOLTAIC PANELS WORKING WITH A VEGETATED ROOF TO CREATE MICROCLIMATES MAKING BOTH SYSTEMS MORE EFFICIENT

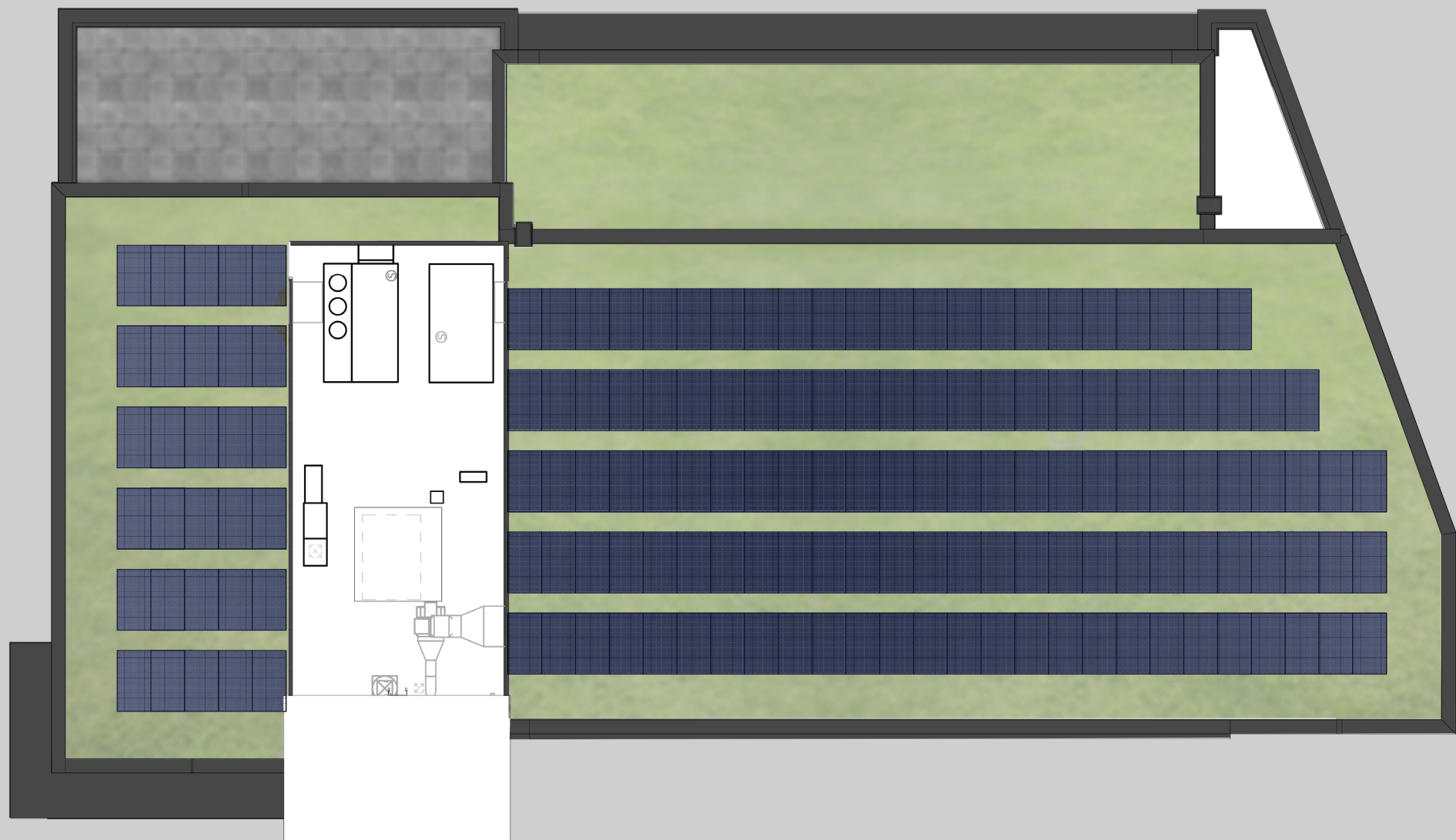
STORMWATER PLANTER BOXES WITH NATIVE LANDSCAPING

EV CHARGING STATIONS FOR COUNTY VEHICLES & INFRASTRUCTURE FOR FUTURE ELECTRIC APPARATUS



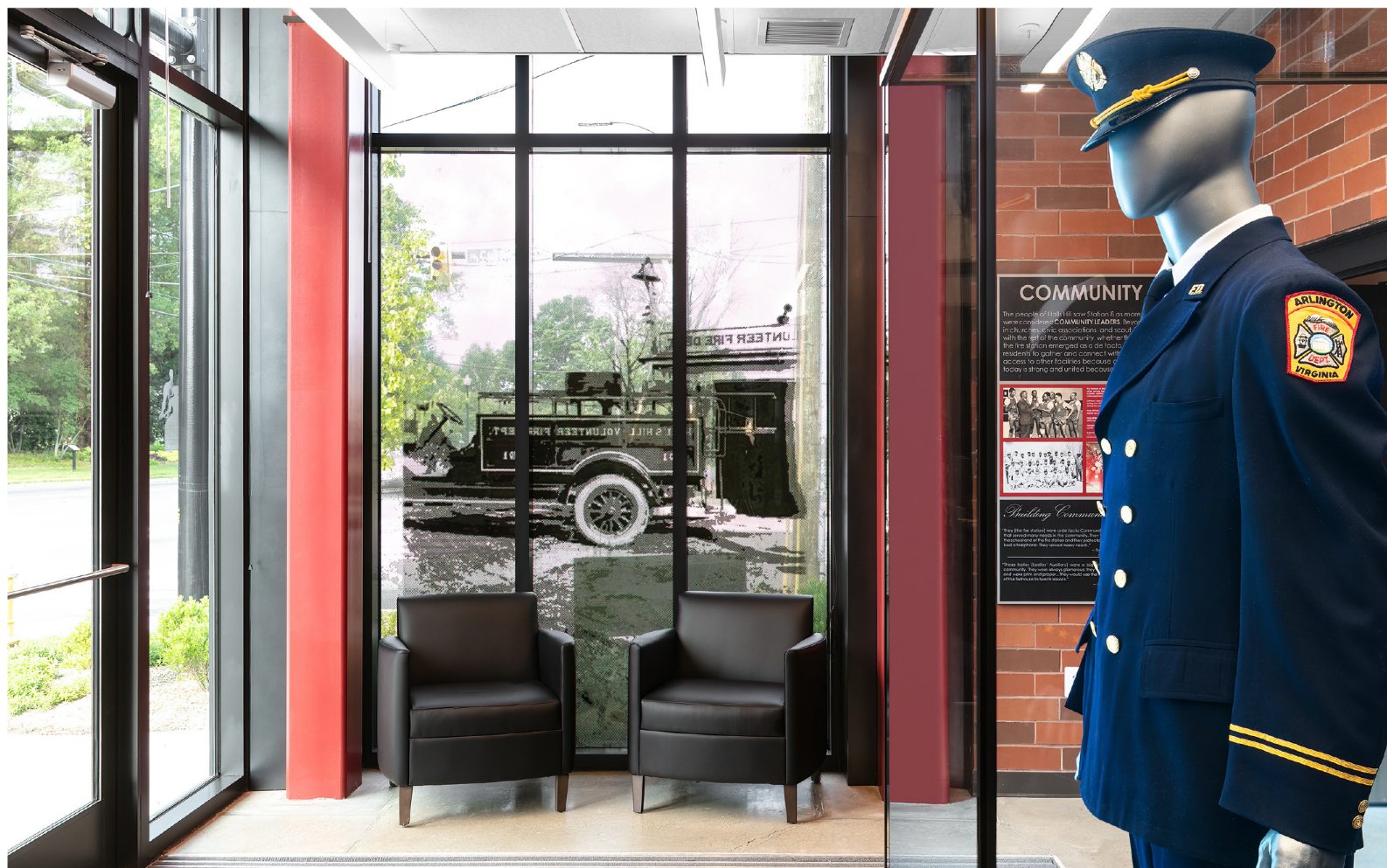
ROOF PLAN

- PATIO
  - VEGETATION
  - SOLAR
  - ROOF EDGE
- DINING PATIO
  - GREEN ROOF
  - BIO-SOLAR ROOF
  - MECHANICAL



THIRD FLOOR PLAN

- BUNK
  - CIRCULATION
  - LIVING SPACES
  - SERVICE
- DINING PATIO
  - DINING
  - KITCHEN
  - PANTRY
  - DAY ROOM
  - JANITOR'S CLOSET
  - LAUNDRY
  - BUNK ROOM



TO INCLUDE PASSERSBY IN THE DESIGN, THE IMAGE OF THE COMMUNITY'S FIRST ENGINE IS SUPERIMPOSED ON THE LOBBY GLASS. THE PLACEMENT OF THE IMAGE ALLOWS BOTH THE COMMUNITY (FROM INSIDE) AND THE STATION (FROM OUTSIDE) TO BE VIEWED THROUGH THE LENS OF HISTORY.

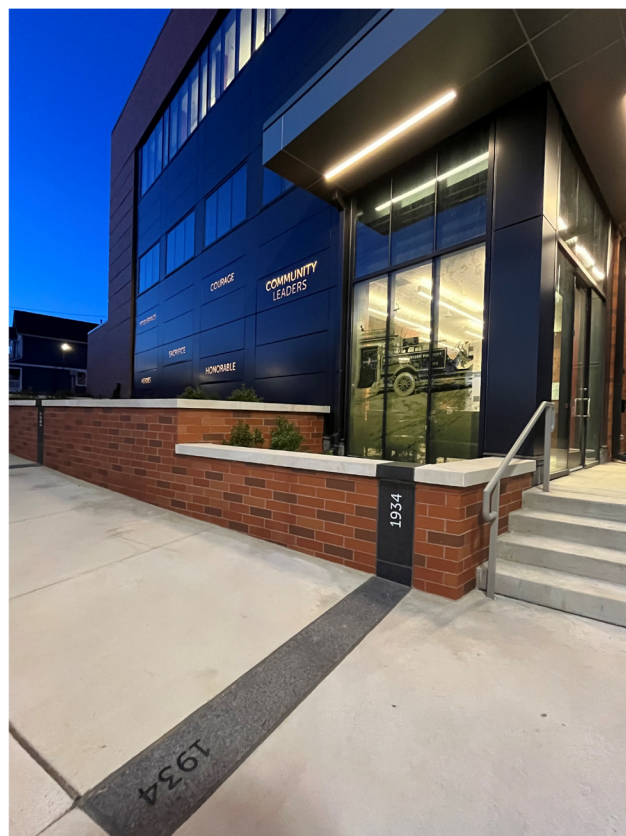
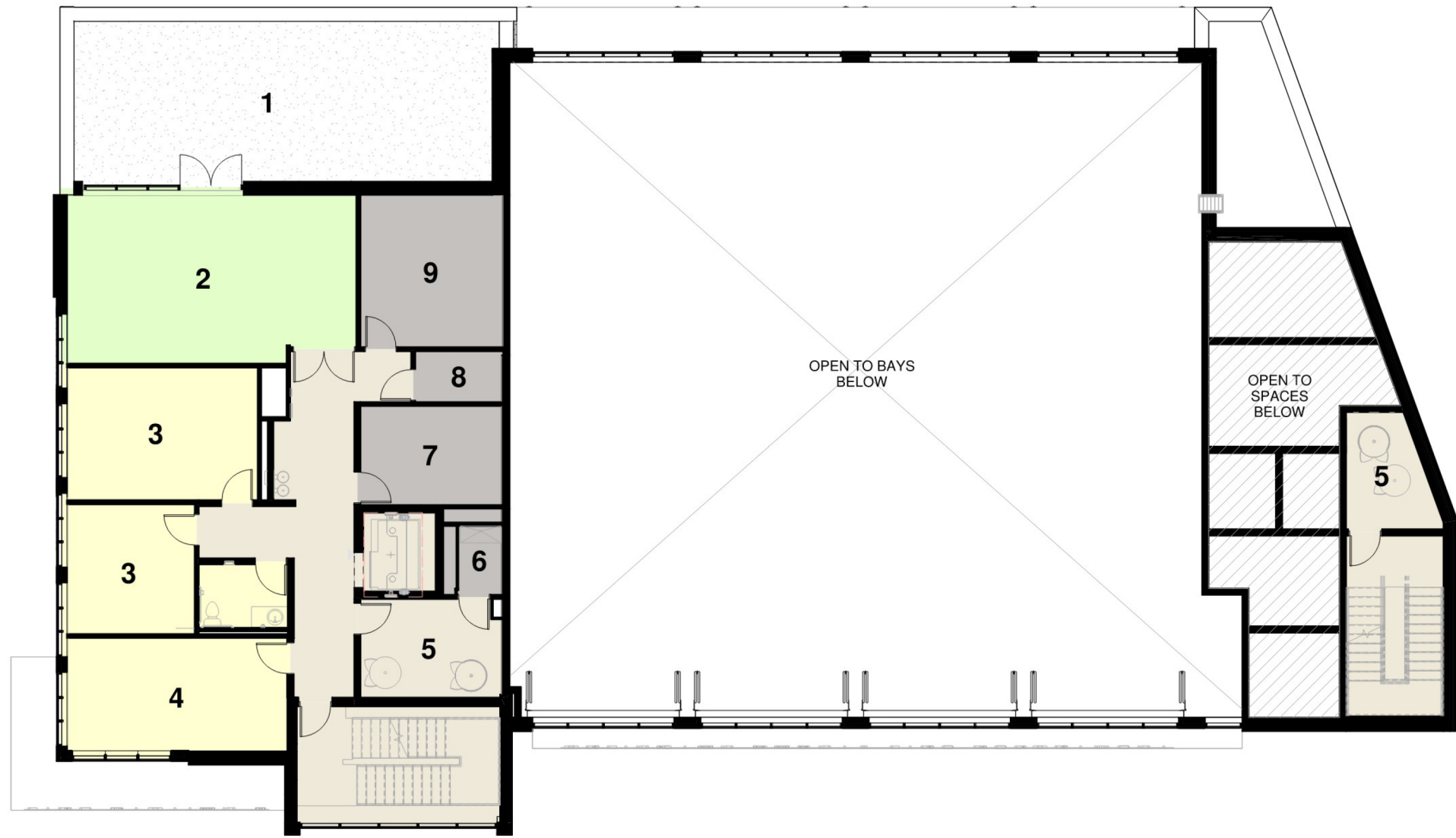
WHILE THE ORIGINAL STATION IS LOCATED UNDER THE NEW PARKING LOT, AN ADA COMPLIANT TIMELINE OF HISTORIC DATES ETCHED INTO GRANITE PROGRESSES THROUGH THE HISTORY AS YOU WALK TO THE FRONT DOOR OF THE NEW STATION.

THE LOBBY IS OPEN 24/7 AND ALLOWS DIFFERENT LEARNING STYLES TO PARTICIPATE. THE MONITOR SHOWS A LOOP OF VIDEOS AND ORAL HISTORIES WHILE THE PANELS PROVIDED WRITTEN DESCRIPTIONS, QUOTES FROM THE COMMUNITY AND HISTORIC DESCRIPTIONS. ALSO INCLUDED ARE HISTORIC ARTIFACTS SUCH AS A FULL UNIFORM, BOOTS AND A BADGE.



SECOND FLOOR PLAN

- ADMIN
  - CIRCULATION
  - LIVING SPACES
  - SERVICE
- EXERCISE PATIO
  - EXERCISE
  - OFFICE
  - CONFERENCE / TRAINING
  - POLES
  - JANITOR'S CLOSET
  - TELECOM ROOM
  - STORAGE
  - MECHANICAL ROOM



THE LOBBY EXHIBIT INCLUDES ARTIFACTS DONATED BY THE ORIGINAL HHVD FIREFIGHTERS AND THEIR SURVIVING FAMILY MEMBERS. THESE ARTIFACTS INCLUDE FIREFIGHTING BOOTS FROM THREE GENERATIONS OF THE FAMILY OF CAPT. HARTMAN REED (RET.), THE FIRST BLACK CAPTAIN IN THE ARLINGTON COUNTY FIRE DEPARTMENT. HIS SON, CAPT. DONALD REED (RET.) SERVED ACFD FOR 30 YEARS, AND HIS GRANDDAUGHTER, LEAH MARTINEZ IS CURRENTLY SERVING THE COUNTY.

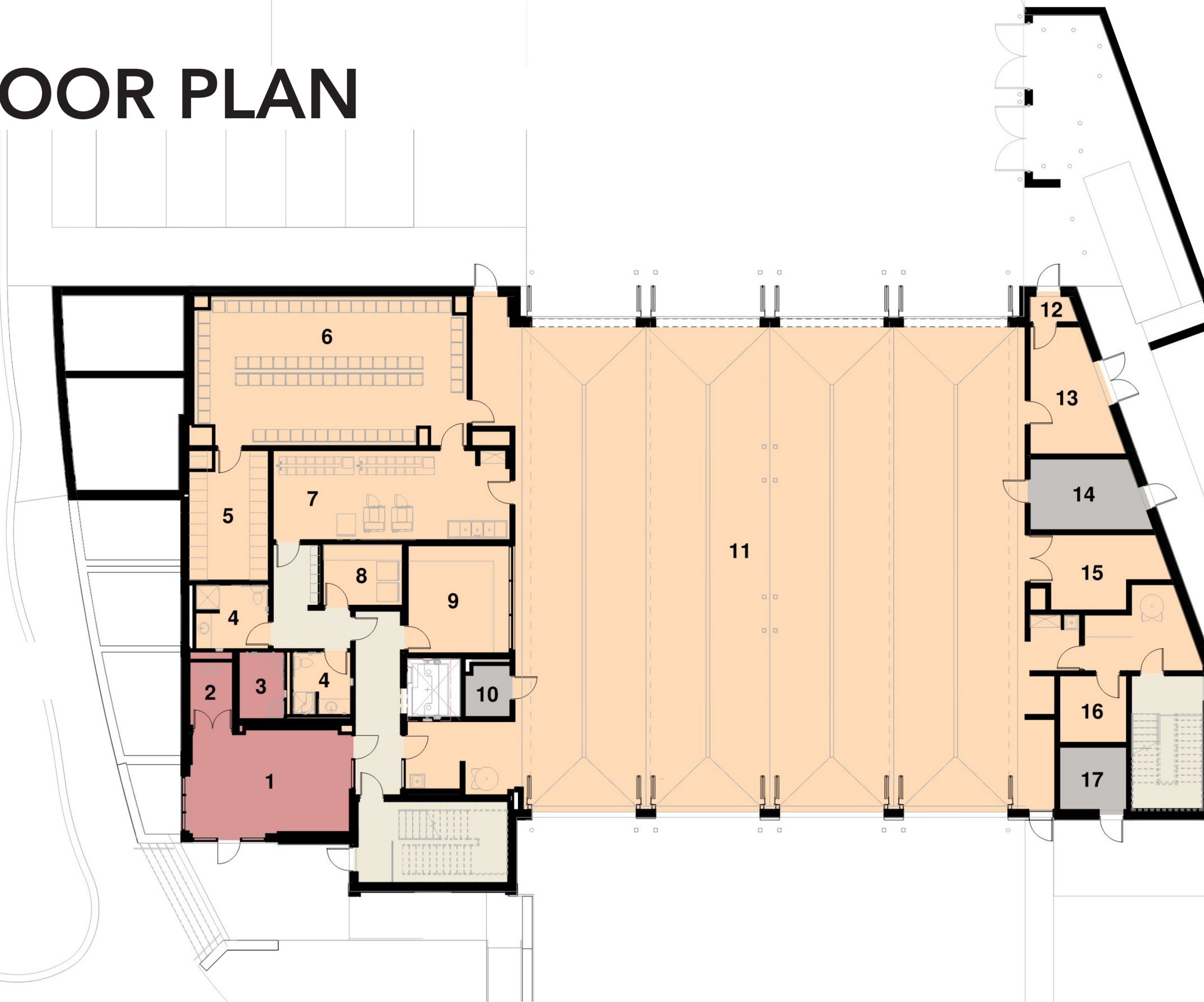


AT THE BASE OF THE BEACON OF LIGHT ALONG THE ACCESSIBLE PATH TO THE FRONT DOOR, THE STATION NUMBER IS PROMINENTLY DISPLAYED IN A CUSTOM SIGN DESIGNED AROUND THE HISTORIC STATION 8 UNIFORM BADGE.



FIRST FLOOR PLAN

- APPARATUS BAYS
  - CIRCULATION
  - PUBLIC
  - SERVICE
- LOBBY / MUSEUM
  - SAFE HAVEN
  - PUBLIC TOILET
  - TOILET / SHOWER
  - RESERVE GEAR
  - PPE LOCKERS
  - DECON / GEAR
  - LAUNDRY
  - PERSONAL LAUNDRY
  - OFFICE
  - UTILITY ROOM
  - APPARATUS BAY
  - BIOHAZARD DISPOSAL
  - SHOP / STORAGE
  - ELECTRICAL ROOM
  - SCBA COMPRESSOR AND FILL STATIONS
  - EMS STORAGE
  - SPRINKLER ROOM



(Left) The department's preferences included an enclosed day room with no exterior windows to provide a retreat without risk of glare from outside. This room is acoustically separate from the kitchen/dining space and doubles as a training space when needed.

(Right) Station 8 includes a dining room table adjacent to a small terrace space that houses the gas grill. This space is highly functional and sized to allow multiple people to cook, a dedicated serving space as well as a nook housing the coffee machine and trash/recycling.



(Left) The third floor provides individual bunk suites allowing optimal gender neutrality of living accommodations. Eleven of the bunk suites are adaptable into fully accessible units in the event a future need arises, and the twelfth is built as fully accessible. Each suite includes a single person bunk room, a locker alcove and an ensuite bathroom. The layout allows for a firefighter to sleep past shift change as needed without being interrupted by the arriving personnel for the next shift utilizing their locker or taking a shower.

2024

(Right) While the footprint was significantly restricted by the site size and proportions, a company office was able to be located on the first floor adjacent to the public lobby. This space is utilized by station personnel for report writing, studying, and incident follow up as needed.



(Left) The apparatus bays include 4 drive through bays as well as a direct capture exhaust system, four fold doors and a state of the art station alerting system.

(Right) The fitness room was designed on the second floor to provide acoustic separation from the sleeping quarters and includes an innovative outdoor patio to expand the workout space allowing a full shift to train simultaneously with a variety of equipment.

