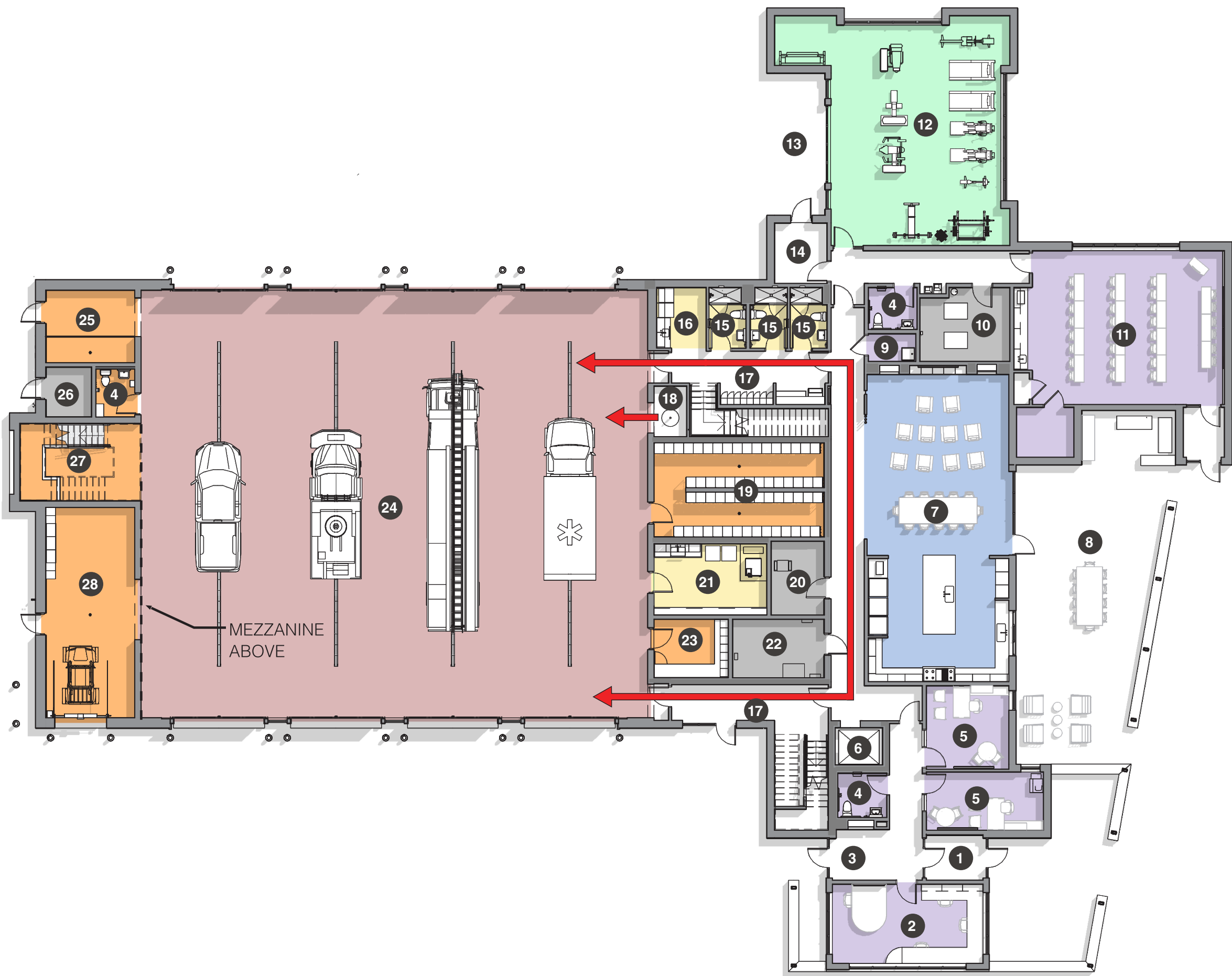




LEVEL 1 FLOOR PLAN



- ROOM LEGEND
- ENTRY (PUBLIC)
CREW / WATCH OFFICE
ENTRY (FIREFIGHTERS)
TOILET RM
OFFICE
ELEVATOR
DAYROOM/KITCHEN /
DINING
OUTDOOR DINING PATIO
JANITOR CLOSET
MECHANICAL RM

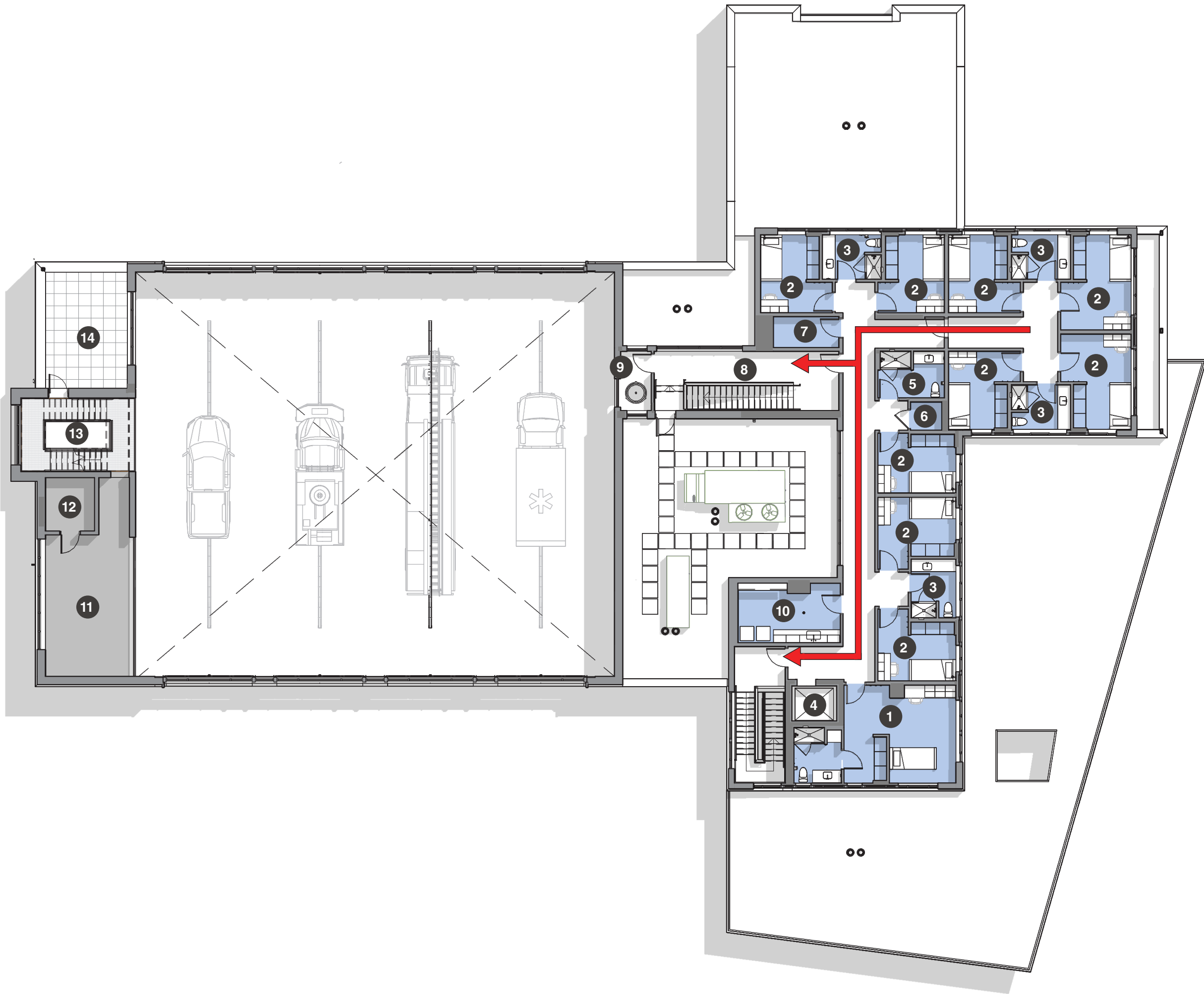
TRAINING / MEETING RM
FITNESS
OUTDOOR FITNESS PATIO
ENTRY
DECON BATH
LAUNDRY
POSITIVE PRESSURE
CORRIDOR
SLIDE POLE (POSITIVE
PRESSURE)
BUNKER GEAR

DATA / IT RM
DECON RM
ELECTRICAL RM
EMS STORAGE
APPARATUS BAY
TOOL WASH / DECON
ALCOVE
WATER ENTRY
STAIR TOWER
SHOP / MAINT / STORAGE

CLEAR / DIRECT
CIRCULATION CORRIDORS

ADMINISTRATIVE
APPARATUS BAY
APPARATUS BAY SUPPORT
DECON
FITNESS
LIVING AREA
BUILDING SUPPORT / MEP
CIRCULATION

LEVEL 2 FLOOR PLAN



- ROOM LEGEND
- OFFICER'S SUITE
BEDROOM
BATHROOM
ELEVATOR
ACCESSIBLE BATHROOM
JANITOR CLOSET
STORAGE
POSITIVE PRESSURE
CORRIDOR

SLIDE POLE (POSITIVE
PRESSURE)
LAUNDRY
TRAINING MEZZANINE
MECHANICAL RM
STAIR TOWER
OUTDOOR PATIO

APPARATUS BAY SUPPORT
LIVING AREA
BUILDING SUPPORT / MEP
CIRCULATION

CLEAR / DIRECT
CIRCULATION CORRIDORS

SITE PLAN



- SIZE
- 18,927 sf
- YEAR COMPLETED
- In Design
- SCHEDULE
- Start: 3/2024
- Estimated Completion: 11/2026
- COST
- \$17.6M Estimated
- SERVICES
- Feasibility
- Planning
- Architecture
- Interiors
- Energy Modeling

Set against the dynamic backdrop of Monument, Colorado, the new fire station is thoughtfully designed to address the challenges posed by the region’s diverse climate while meeting the diverse operational needs of modern firefighters.

The architecture of Station No. 3 draws from the sweeping lines and understated elegance of prairie design, with broad horizontal roof overhangs providing much-needed shade and shelter for firefighters and equipment. One of the station’s most distinctive features is its red tower, which rises boldly from the horizontal expanse. Serving as both a visual landmark and a functional watchtower, this element is integral to the identity of the station. Beyond its striking presence, the tower is designed for firefighter training, offering opportunities for rescue drills and physical preparedness, ensuring the crew remains ready for any emergency.

Equally notable are the glass apparatus bay doors lining the façade. These expansive doors fill the station with natural daylight, creating a bright and welcoming environment that supports the well-being of firefighters throughout the day while providing drive through access. At night, the illuminated bay doors transform the building into a softly glowing lantern, a reassuring symbol to the community of preparedness and safety visible from the adjacent heavily travel highway.

Bold red accents, featured both outside and within, reinforce the fire station’s identity and provide vibrant contrast against a backdrop of enduring architectural finishes. Functionally the station focuses on clear and direct access from the second floor via two stairs and a slide pole to ensure efficient turnout times for the crew and faster response to the community.

The thoughtful site placement allows for future expansion, accommodating administrative spaces and additional emergency services as Monument grows. The design balances aesthetics, practicality, and the health of those who serve, while celebrating the vital role that training and readiness play in the life of the station

