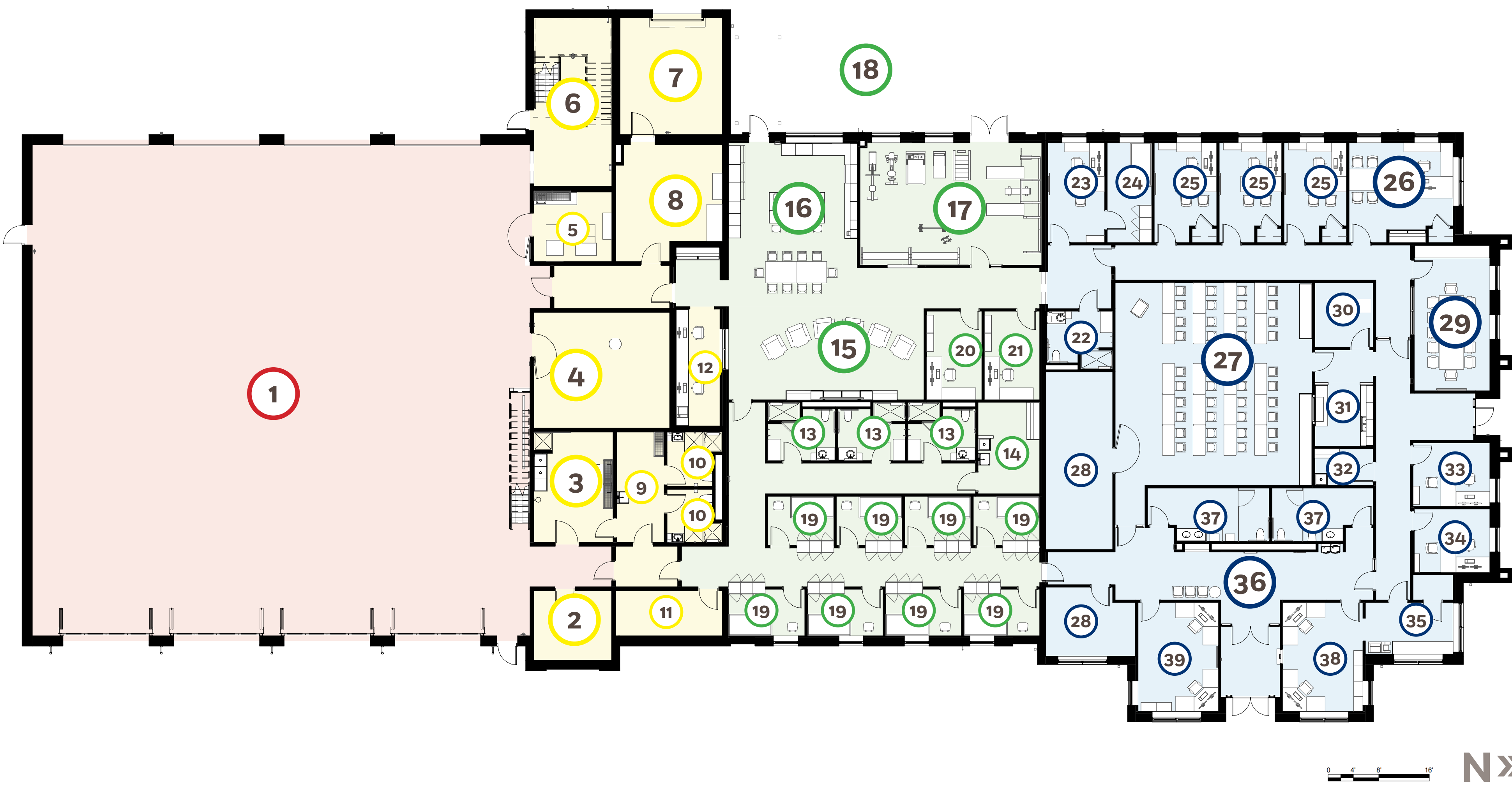


FIRE STATION 24



FLOOR PLAN



The new Fire Station 24 will serve the growing Springboro community along the I-75 corridor between the Cincinnati and Dayton areas. The 20,000-square-foot station will serve as the fire district’s new headquarters, with administrative office space for the chief, three assistant chiefs, fire marshal, administrative lieutenant, office manager, and part-time clerk.

KZF Design worked with Clearcreek Township from the very beginning by performing a needs assessment study consisting of facility assessments of three existing fire stations and concept planning and programming for a new headquarters fire station.

Fire Station 24 came into fruition as a result of this study and was designed to meet the needs of the growing community while providing a home-away-from-home to their firefighters. The station includes administrative areas, living spaces, a fitness room, bunks, kitchen/dining, four apparatus bays, decontamination zones, a training tower, locker rooms, and training areas.

KZF Design provided project management, architecture, MEP, structural engineering, and interior design services.

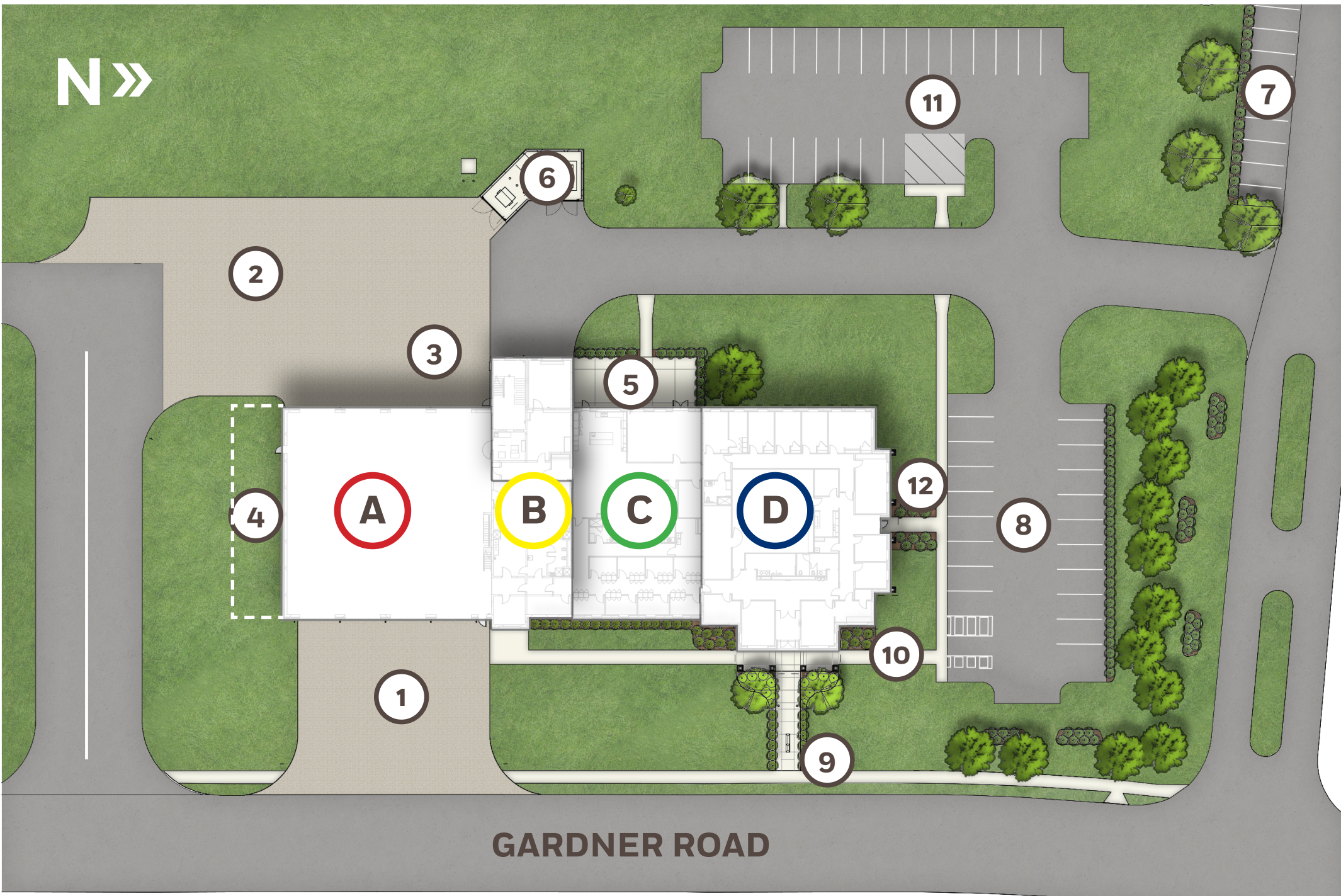


PROJECT STATS

Size: 20,000 SF
Construction Cost: \$10.5 M
Complete: 2025



SITE PLAN



SITE PLAN LEGEND

- 1 FRONT APRON
- 2 REAR APRON
- 3 TRAINING APRON
- 4 FUTURE EXPANSION AREA
- 5 EXTERIOR REC/FITNESS PATIO
- 6 GENERATOR/DUMPSTER ENCLOSURE
- 7 PUBLIC PARKING (FOR ADJACENT PARK)
- 8 ADMIN STAFF PARKING
- 9 MONUMENT SIGN
- 10 PUBLIC ENTRANCE
- 11 FIREFIGHTER PARKING
- 12 ADMIN STAFF ENTRANCE

A - HOT (RED) ZONE

- 1 APPARATUS BAY

B - TRANSITION (YELLOW) ZONE

- 2 EMS
- 3 DECONTAMINATION
- 4 TURNOUT GEAR
- 5 SCBA
- 6 STAIR/TRAINING TOWER
- 7 EMS STORAGE
- 8 SHOP
- 9 PERSONNEL DECONTAMINATION
- 10 DECONTAMINATION SHOWER
- 11 QUARTERMASTER
- 12 ALARM/REPORT

C - COLD (GREEN) ZONE

- 13 PRIVATE SHOWER/TOILET
- 14 LAUNDRY/STORAGE
- 15 DAY ROOM
- 16 KITCHEN/DINING
- 17 FITNESS ROOM
- 18 PATIO
- 19 DORM
- 20 EMS SUPERVISORS
- 21 STATION LIEUTENANTS

D - ADMINISTRATIVE (BLUE) ZONE

- 22 TOILET
- 23 SHIFT BATTALION OFFICE
- 24 SHIFT BATTALION DORM
- 25 OFFICES
- 26 CHIEF OFFICE
- 27 TRAINING ROOM
- 28 STORAGE
- 29 CONFERENCE ROOM
- 30 IT
- 31 SERVING
- 32 JANITOR
- 33 TRAINING OFFICER
- 34 INSPECTOR
- 35 WORK ROOM
- 36 LOBBY
- 37 RESTROOMS
- 38 ADMIN ASSISTANTS
- 39 FIRE PREVENTION

“We are really excited for the opening of the new station. This will allow us to continue our mission as a department, which is to ‘proudly serve with compassion, integrity and professionalism.’ Every day we strive to provide quality emergency services to Clearcreek Twp. and the city of Springboro”

Fire Chief Steve Agenbroad

HEALTH & WELLNESS



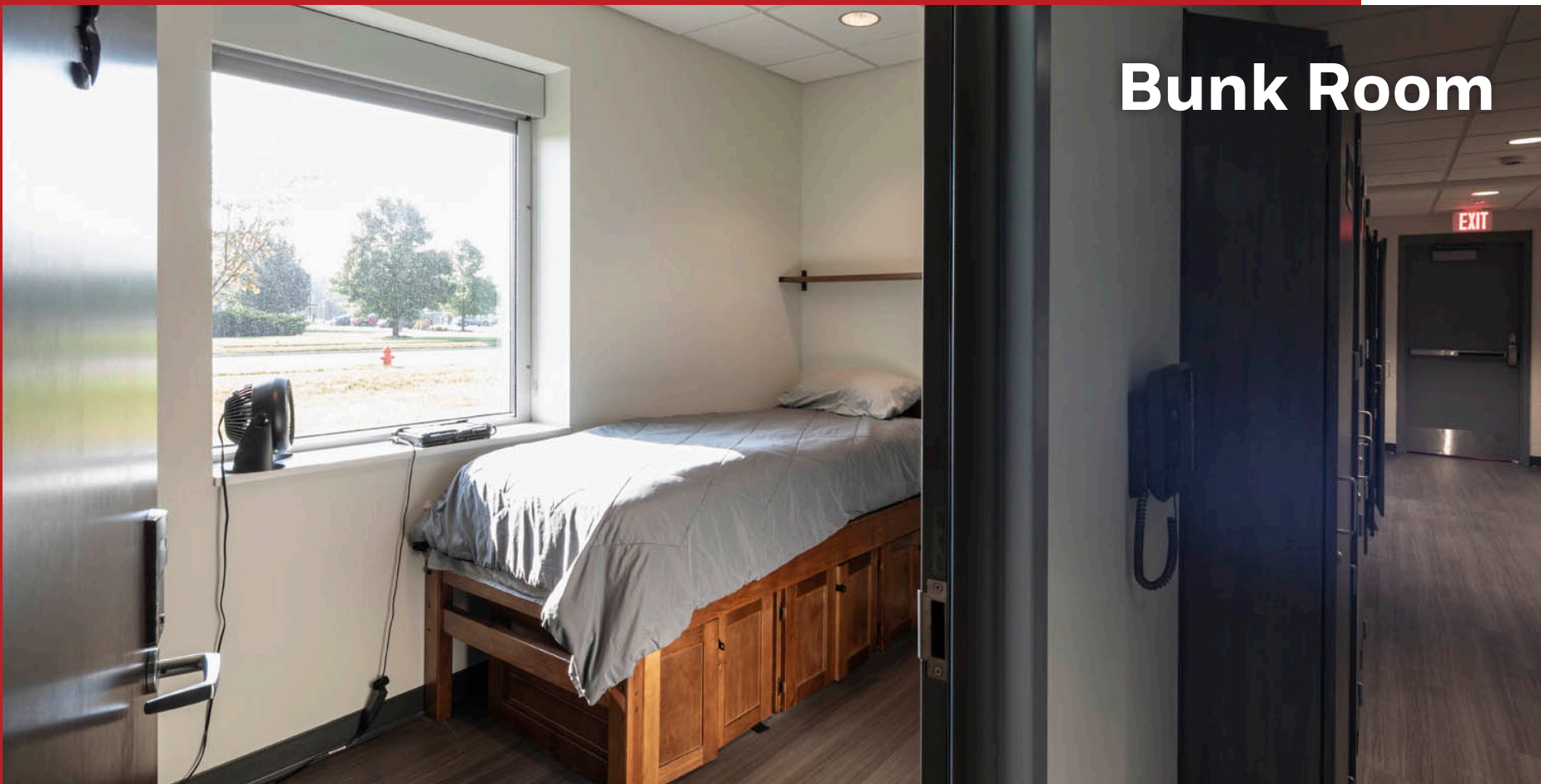
Fitness Center

The fitness room at the new Clearcreek Township Fire Station 24 is thoughtfully designed to support firefighters’ physical health, mental well-being, and operational readiness. Outfitted with versatile training equipment, the space accommodates a range of fitness needs—from strength and endurance training to flexibility and mobility work—ensuring firefighters can maintain the stamina required for the demands of their profession. Large windows flood the room with natural light, creating an energizing and uplifting environment that promotes focus and reduces stress. A dedicated door to the outside allows for seamless indoor-outdoor workouts, providing fresh-air training options and variety in exercise routines. This integration of functional design, training versatility, and wellness-focused features reflects the department’s commitment to keeping firefighters healthy, resilient, and prepared to serve their community.

Outdoor Patio



The outdoor patio at the back of the station offers firefighters a comfortable space to unwind, recharge, and connect with one another outside of their demanding shifts. Equipped with tables and surrounded by fresh air, it provides a peaceful setting for meals, casual conversations, or quiet moments of reflection—supporting both mental wellness and team camaraderie.



Bunk Room

The individual, gender-neutral bunk rooms at Fire Station 24 are designed to maximize rest and recovery, which are essential to firefighters’ health and performance. Each room is equipped with light-blocking curtains to create a dark, quiet environment that supports high-quality sleep regardless of shift schedules. By providing personal space, the design also reduces distractions and promotes privacy, helping staff decompress after intense calls.

TRAINING SPACES

The training facilities at Fire Station 24 are designed to keep firefighters sharp, skilled, and ready for any emergency. The training tower and staircase provide a safe, controlled environment where crews can simulate real-world fire and rescue scenarios, such as high-rise evacuations, ladder operations, and hose advancement, all without leaving the station. This hands-on training builds muscle memory, reinforces safety protocols, and strengthens teamwork under pressure.

Complementing the tower is a large conference room, ideal for classroom instruction, strategy sessions, and post-incident reviews. Together, these facilities offer a well-rounded training environment that integrates physical drills with critical thinking, ensuring firefighters remain prepared, confident, and effective in the field.



LIVING SPACES

The living spaces at Fire Station 24 are thoughtfully designed to serve as a true home-away-from-home for firefighters during their shifts. Featuring an open-concept kitchen, dining, and living room, the area encourages daily interaction, teamwork, and camaraderie among crew members.

The kitchen offers ample storage for shared meals and is bathed in natural light from large windows, creating a warm and welcoming atmosphere. Adjacent dining and living areas provide comfortable spaces for gathering, relaxing, or sharing stories after a call. This inviting, communal environment supports both the physical comfort and emotional well-being of the firefighters, fostering a sense of belonging and family within the station.

