

# 9TH & MARION FIRE STATION

1201 N 9TH ST, READING, PENNSYLVANIA 19604



MODERN DESIGN | HEALTH-FOCUSED | INNOVATIVE MODEL | TRADITION RE-IMAGINED



LOCKER CORRIDOR



GYM



DAY ROOM



ELEVATOR



BATTALION CHIEF OFFICE

## WHERE TRADITION MEETS TRANSFORMATION

The new Reading Fire Station at 9th and Marion Streets is a bold, modern response to the evolving demands of fire service while honoring the traditions of its profession and community. Strategically located on an urban infill lot, the station restores continuity to the neighborhood fabric while projecting a strong civic identity through its architecture. Its design elevates operational performance, firefighter health, and neighborhood connection. **The first floor of the station is fully dedicated to fire operations.** It features a three-lane apparatus bay with modern four-fold doors that improve response time by allowing faster and safer egress compared to traditional overhead doors. The bay is supported by isolated turnout gear storage, a decontamination zone, and dedicated fire gear storage that is all designed to limit firefighter exposure to carcinogens and contaminants. **A mezzanine above the bay provides both auxiliary storage and infrastructure** for high-angle training, enhancing in-house preparedness. **The second floor is dedicated to firefighter wellness and downtime.** It houses bunk rooms, a dayroom, kitchen, fitness area, administrative offices, and study space. Each of these zones wrap around

a centrally located outdoor courtyard. This courtyard is a defining feature of the station, infusing natural light into nearly every occupied interior space and serving as a shared social and recovery zone for the crew. The abundance of daylight throughout the facility supports circadian rhythm, reduces fatigue, and creates a more comfortable, home-like environment for 24-hour shifts. **A key design innovation is the station's split-level fire pole system,** which preserves the tradition and efficiency of vertical response while mitigating long-term joint and impact injuries associated with full-height drops. This feature demonstrates a thoughtful balance between firefighter culture and physical well-being. Three stair towers and three strategically placed fire poles ensure efficient vertical circulation and rapid access from all living and administrative areas directly into the apparatus bay. This design supports response readiness without compromising health or comfort. Architecturally, the station stands out in its context. Surrounded by traditional masonry rowhomes and civic buildings, the decision to clad the station in metal paneling and steel structure was deliberate. It conveys modernity, resilience, and a forward-

looking municipal presence. Rather than blending in, the building asserts itself as a symbol of contemporary public safety—a visual landmark of investment and care within the community. The design is softened and balanced by pedestrian-scale massing, a strong street presence, and subtle integration of historical elements, including salvaged fire alarm boxes and the original cornerstone, now displayed in the public lobby. **This project represents the result of a years long effort to deliver a modern fire service facility in one of the city's most active and historically underserved neighborhoods.** Early discussions began more than a decade ago, led by committed community advocates and city officials who recognized the outdated conditions and operational limitations of the previous fire station. Over time, those efforts gained traction, with strong local leadership and growing public support helping to secure both federal funding and city capital investment. **Opening its doors in 2024, it now stands as a lasting symbol of public safety, neighborhood reinvestment, and the persistence of a community that worked tirelessly to bring this vision to life.**



TIERED LOW-IMPACT FIRE POLES



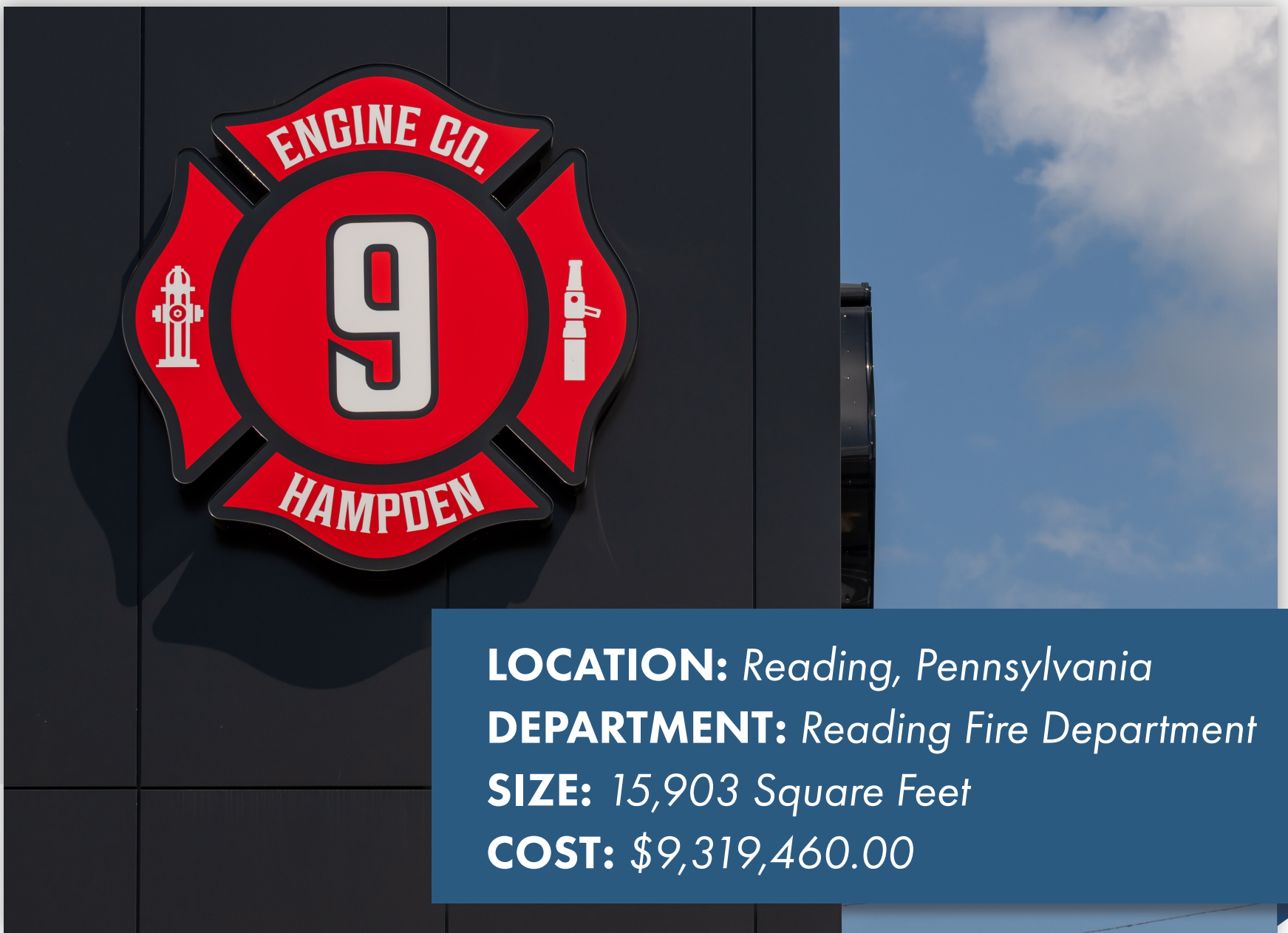
IN-STATION TRAINING



APPARATUS BAYS



POLE CLOSET



PANEL



# THE URBAN BEACON

## BUILDING FEATURES

### FIRST FLOOR

- Three Apparatus Bays
- High-speed Four Fold Doors
- Independently Ventilated Turnout Gear Room
- Fire & EMS Equipment Storage
- Multi-tier Decontamination Areas
- Vestibule & Public Lobby with Elevator
- Lobby Watch Office for Shift Coordination
- Dayroom for Rest & Readiness

### MEZZANINE

- Designated Mechanical & Training Mezzanine
- High-Angle & In-Station Training Features
- Split-level Pole Drop for Rapid Response & Reduced Landing Impact

### SECOND FLOOR

- Gathering Kitchen & Dining Area
- Open Dayroom
- Private Second-Story Courtyard
- Fitness Room Opens Up to Courtyard
- Dedicated Breakout Spaces
- Separated Living Quarters
- Designated Laundry Facilities
- Battalion Chief's Living Quarters & Office
- 41 Corridor Lockers with Toe-kick Lighting



DECONTAMINATION ROOM



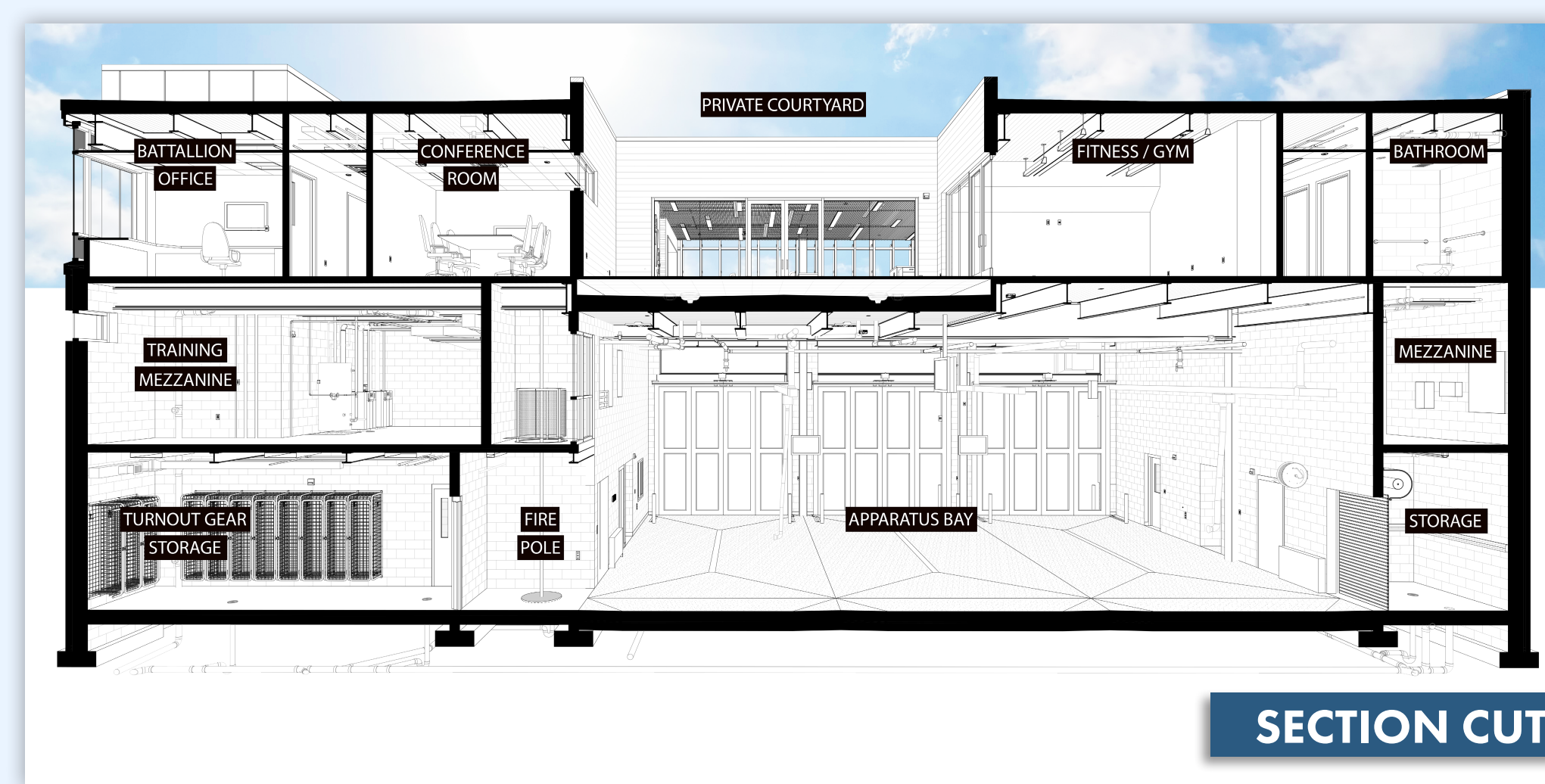
TRAINING MEZZANINE



DAY ROOM



URBAN SITE



SECTION CUT



TURNOUT GEAR STORAGE



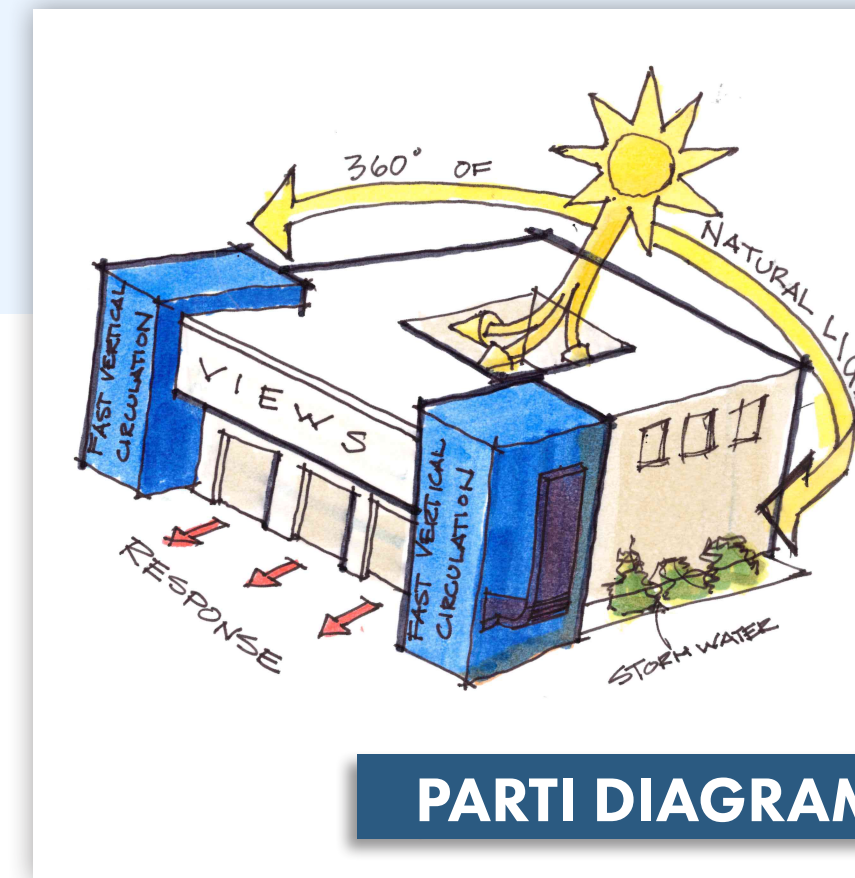
LOBBY WATCH OFFICE



KITCHEN



DINING ROOM

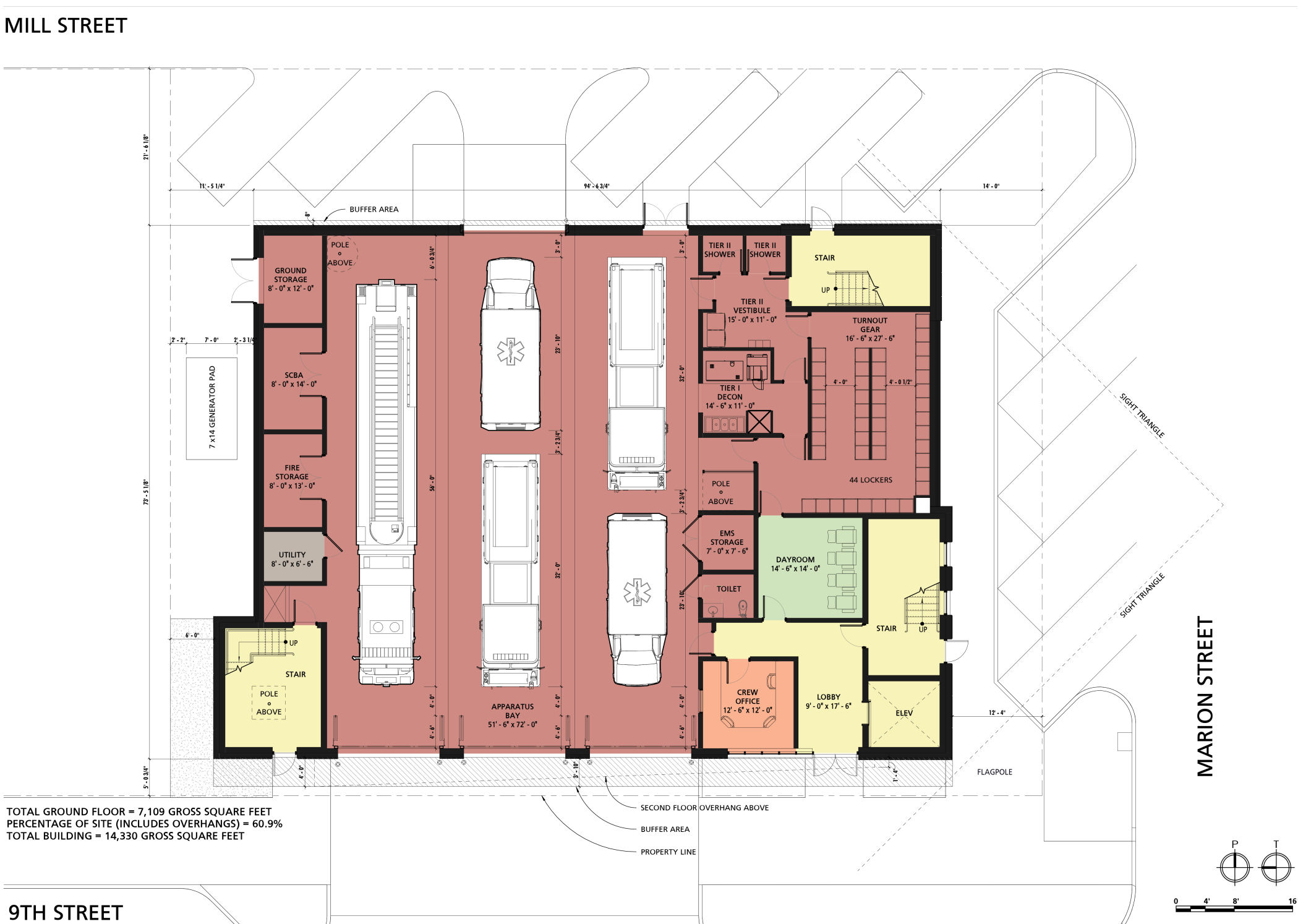


PARTI DIAGRAM

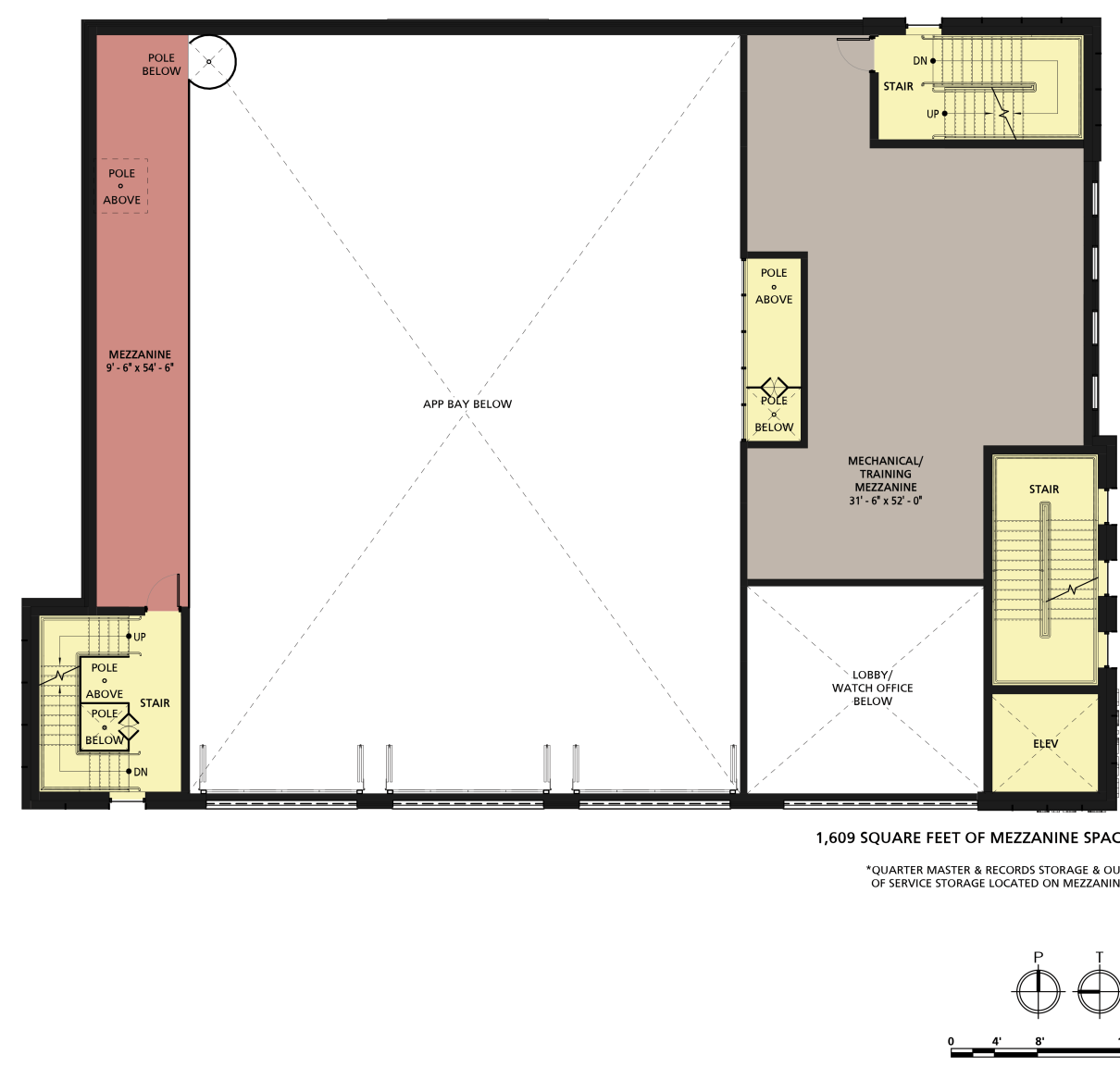


PRIVATE COURTYARD

## FIRST FLOOR & SITE PLAN



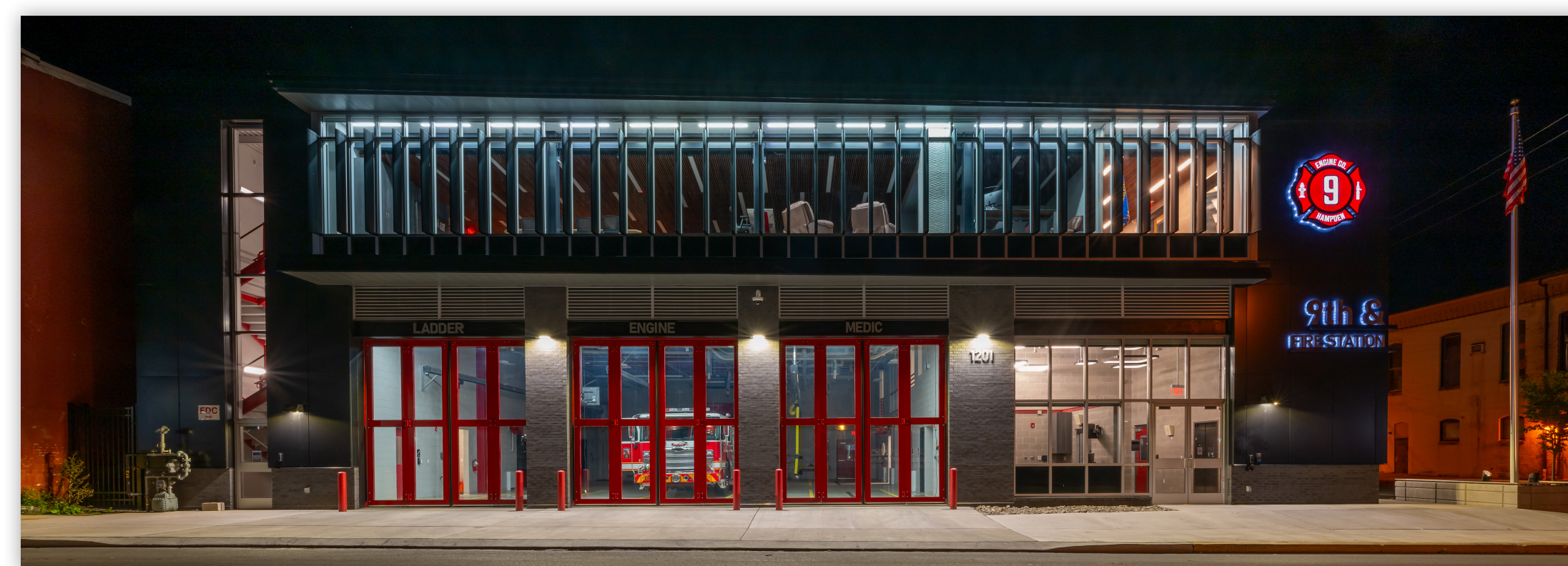
## MEZZANINE FLOOR PLAN



## SECOND FLOOR PLAN



## EXTERIOR LIGHTING



The 9th & Marion fire station features a dynamic exterior alert lighting system that bathes the building's facade in red light whenever crews are dispatched. This powerful visual signal does more than mark the moment of departure; it strengthens the bond between the station and the neighborhood. For community members, the sudden glow is an unmistakable sign that first responders are in action, fostering awareness, caution, and respect as fire or EMS apparatus navigate the short apron and enter traffic. It becomes a moment of shared vigilance, reminding everyone that an urgent mission is underway to protect life, property, and well-being.

The system enhances operational safety for first responders by alerting pedestrians, cyclists, and motorists in the immediate vicinity to exercise heightened awareness, creating safer conditions for rapid deployment. It also serves as a public affirmation of their role, a visible heartbeat of the station that signals their readiness and dedication around the clock. In this way, the lighting system transforms a simple dispatch into a shared community moment, reinforcing the stations' identity as an Urban Beacon.