

CITY OF RIVIERA BEACH FIRE STATION 87

CSA ARCHITECTS + KL CONSTRUCTION



This 31,000 SF, 2-story, 4-bay Fire Station was designed through a collaborative, health-first approach to support first responders. Air-balanced zones minimize exposure to contaminants, with a dedicated decontamination path (gear wash, showers, and extractors) separating the apparatus bay from living quarters. Wellness Spaces include Energy Pods, Saunas, Fitness Areas, and a large communal kitchen. Circadian lighting and a zoned alert system reduce sleep disruption and stress.

Structurally hardened to withstand Category-V storms, the facility is elevated above the 500-year floodplain, equipped with a full-building backup generator, and designed for a 50+ year lifespan. It also serves as the city's Emergency Operations Center and anchors broader goals of infrastructure renewal and urban revitalization.





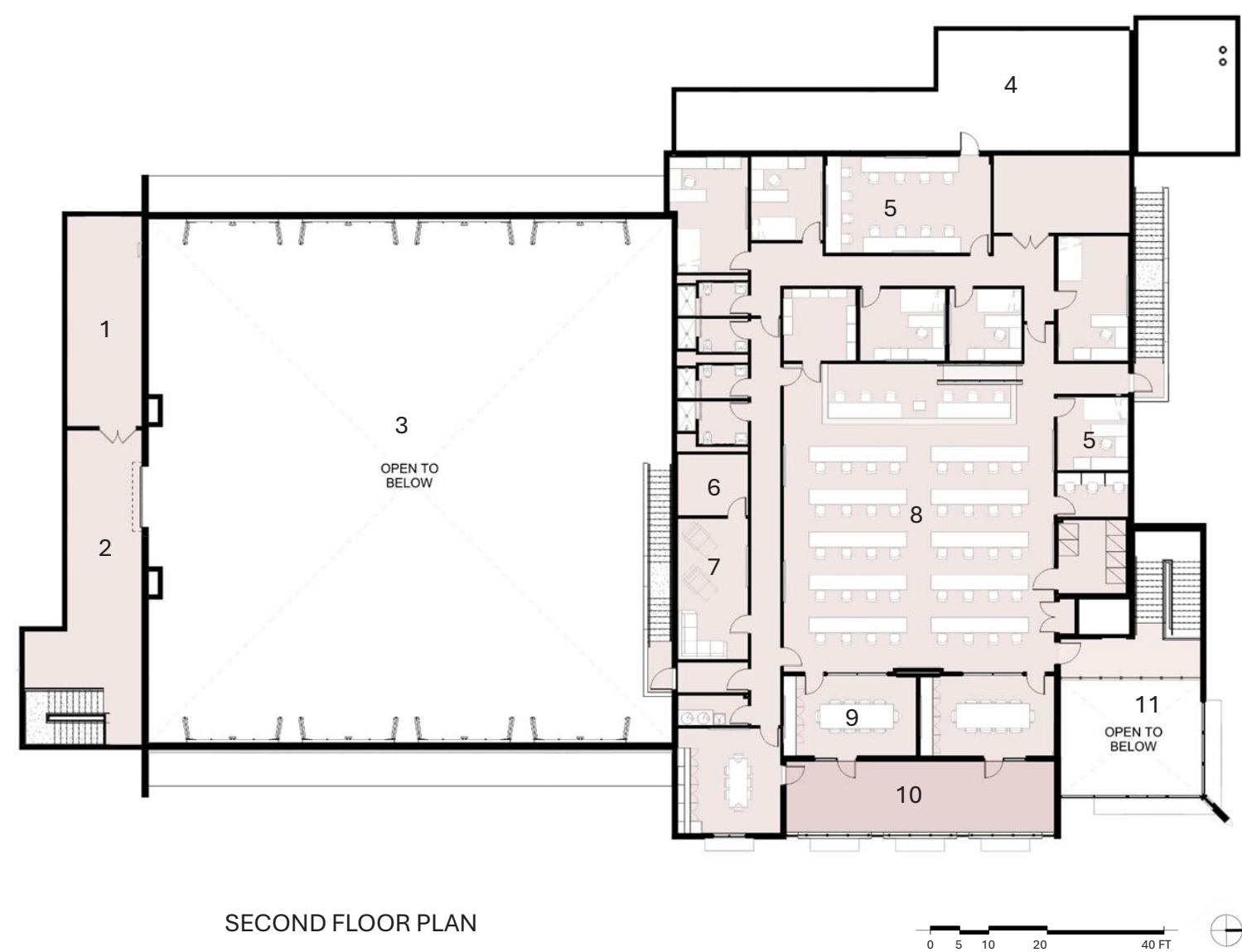
EN055.03
FIRST FLOOR PLAN

1. SECURE CLEAN STORAGE
2. CLEAN STORAGE
3. SCBA
4. TOOL STORAGE
5. HOSE STORAGE
6. APPARATUS BAY
7. BUNKS
8. KITCHEN
9. GENERATOR
10. DAYROOM
11. REPORT ROOM
12. LOCKERS
13. GYM
14. PPE
15. LOBBY
16. OFFICES



SECOND FLOOR PLAN

1. STORAGE
2. MEZZANINE
3. APPARATUS BAY
4. MECHANICAL WELL
5. OFFICES
6. POD ROOM
7. WELLNESS
8. EOC BULLPEN
9. CONFERENCE ROOMS
10. EXTERIOR BALCONY
11. LOBBY



- Site Plan
1. Enclosed Employee Parking
 2. Public Parking
 3. Sports Court
 4. EOC Operations
 5. Entry Sculpture
 6. Apparatus Bay
 7. Public Parking

