

ST. FRANCIS CITY HALL & FIRE STATION

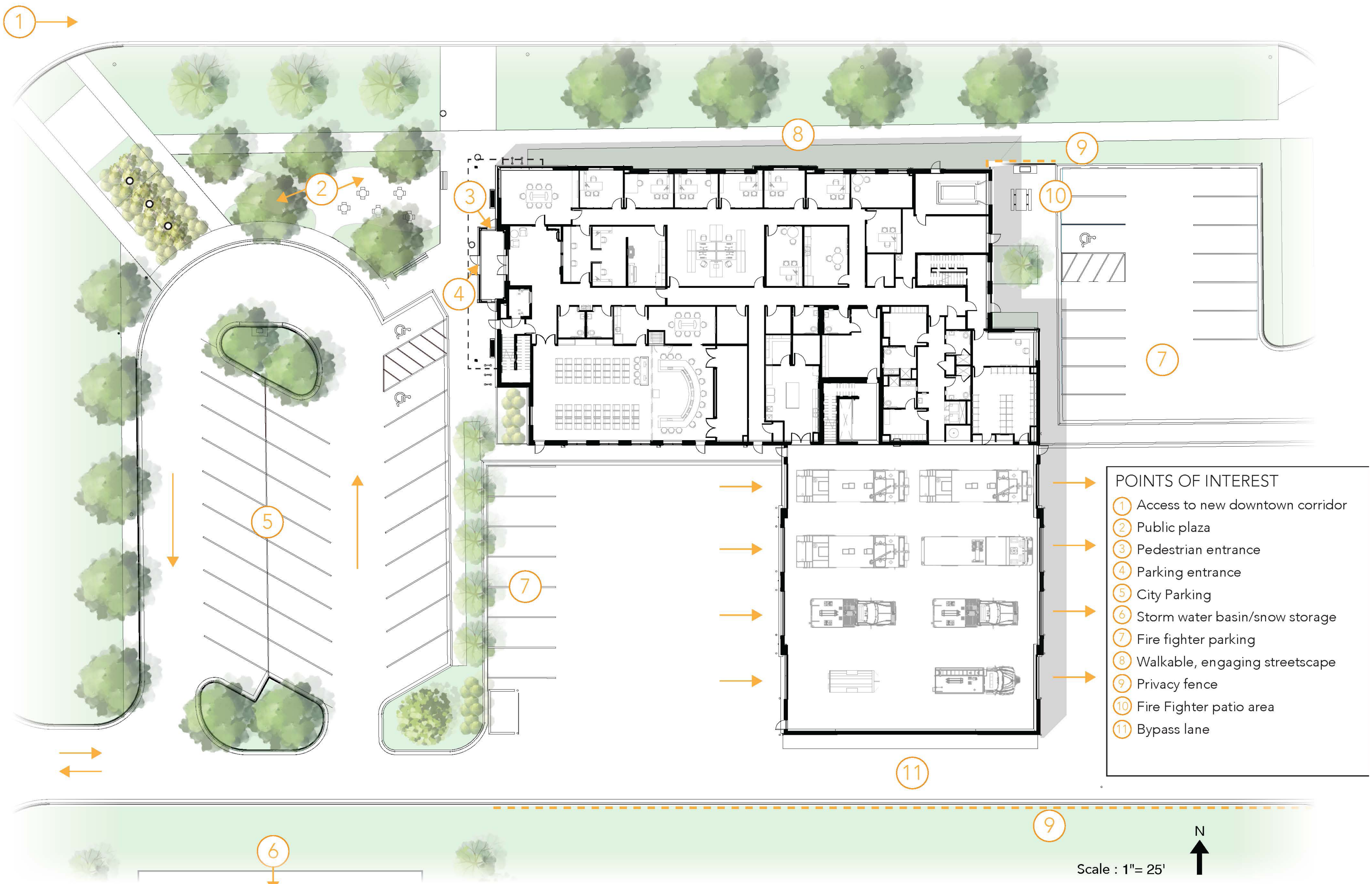


The St. Francis City Hall and Fire Station is a 36,500-square-foot landmark at the heart of the city's revitalized downtown corridor. This mixed-use structure seamlessly blends functionality with architectural elegance, featuring a welcoming public plaza, a striking precast exterior that reflects the city's history, and interiors designed to support both civic and public safety functions.

City Hall houses a spacious Council Chamber, public service counter, and administrative offices. The Fire Station includes eight apparatus bays, a secondary Emergency Operations Center (EOC), a combined hose/training tower, SCBA room, day room, bunk rooms, and an ICC 500-rated storm shelter. Shared spaces, such as conference rooms, a fitness room, and additional support areas, foster collaboration between both departments.

This facility not only meets the operational demands of the city and its first responders but also serves as a source of civic pride for the community.

Project Name St. Francis City Hall & Fire Station
Project Location St. Francis, Minnesota
Architectural Firm for Design Brunton Architects
Fire Station Design Consultants Albertson Engineering, Associated Consulting Engineers, Hakanson Anderson, HKGi
Noteworthy Team Members
Led by women—City Administrator Kate Thunstrom, Senior Project Manager Deb Aldrich of Stahl Construction, and Managing Architect Ginnie Schneider of Brunton Architects—the team brought diverse perspectives and innovative solutions to ensure success. Standout partners included Metro West, Connexus, Anoka County, and St. Francis Public Works, whose dedication and willingness to meet the project's needs were invaluable.
Contractor Stahl Construction
Site Size 2.4 Acres
Building Square Footage 33,647
Completion Month and Year February 2025
Size of Typical Duty Crew 6
Crew Capacity
The fire department operates as a volunteer model, but the design includes 6 bunk rooms to allow for a future model change to career without significant renovation costs.
Number of Bays 8 bays
Principal Structure Type/Building Materials
Architectural Precast Panels with formliner and inlaid brick.
Fully-adhered EPDM roof.
Green Initiatives In-floor heating
Health & Wellness “Hot zones” are isolated from administrative and living areas to minimize the spread of contaminants. Transition spaces are incorporated to encourage proper decontamination and providing zone isolation. Though the department is currently a volunteer model, bunk rooms are provided to enhance emergency response during extreme weather events and allow the fire department to switch easily to a full-time response model in the future.



ST. FRANCIS CITY HALL & FIRE STATION

- 1 LOBBY
- 2 LARGE MEETING
- 3 SERVICE COUNTER
- 4 COUNCIL SEATING
- 5 OFFICE
- 6 SMALL MEETING
- 7 COUNCIL CHAMBER
- 8 OPEN OFFICE
- 9 STORAGE
- 10 SCBA/LAUNDRY
- 11 HOSE TOWER
- 12 LOCKER ROOM
- 13 RADIO
- 14 TURNOUT GEAR
- 15 APPARATUS BAY



1 1ST FLOOR PLAN
1" = 20'-0"

- 1 FUTURE TRAINING
- 2 OFFICE
- 3 REPORT
- 4 FILES
- 5 STORAGE
- 6 TRAINING ROOM
- 7 BUNK
- 8 HOSE TOWER
- 9 RECORDS
- 10 FITNESS
- 11 DAYROOM



2 2ND FLOOR PLAN
1" = 20'-0"

- 1 LOBBY
- 2 LARGE MEETING
- 3 SERVICE COUNTER
- 4 COUNCIL SEATING
- 5 OFFICE
- 6 SMALL MEETING
- 7 COUNCIL CHAMBER
- 8 OPEN OFFICE
- 9 STORAGE
- 10 SCBA/LAUNDRY
- 11 HOSE TOWER
- 12 LOCKER ROOM
- 13 RADIO
- 14 TURNOUT GEAR
- 15 APPARATUS BAY



1 1ST FLOOR PLAN
1" = 20'-0"

- 1 FUTURE TRAINING
- 2 OFFICE
- 3 REPORT
- 4 FILES
- 5 STORAGE
- 6 TRAINING ROOM
- 7 BUNK
- 8 HOSE TOWER
- 9 RECORDS
- 10 FITNESS
- 11 DAYROOM



2 2ND FLOOR PLAN
1" = 20'-0"

