



CENTRAL ISLIP FIRE DEPARTMENT NEW STATION 3

CENTRAL ISLIP, NY

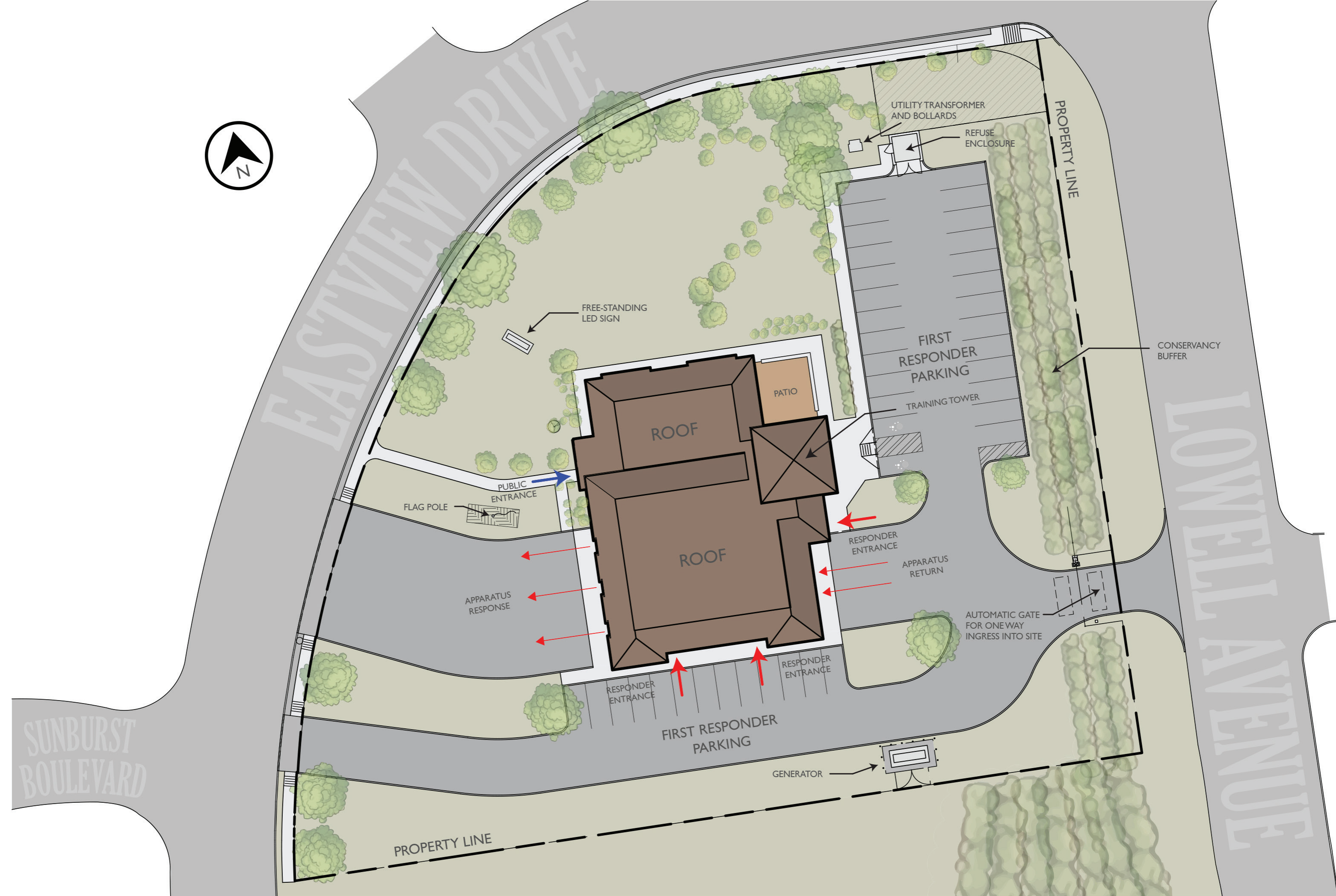


architects
+
engineers

PROJECT DATA

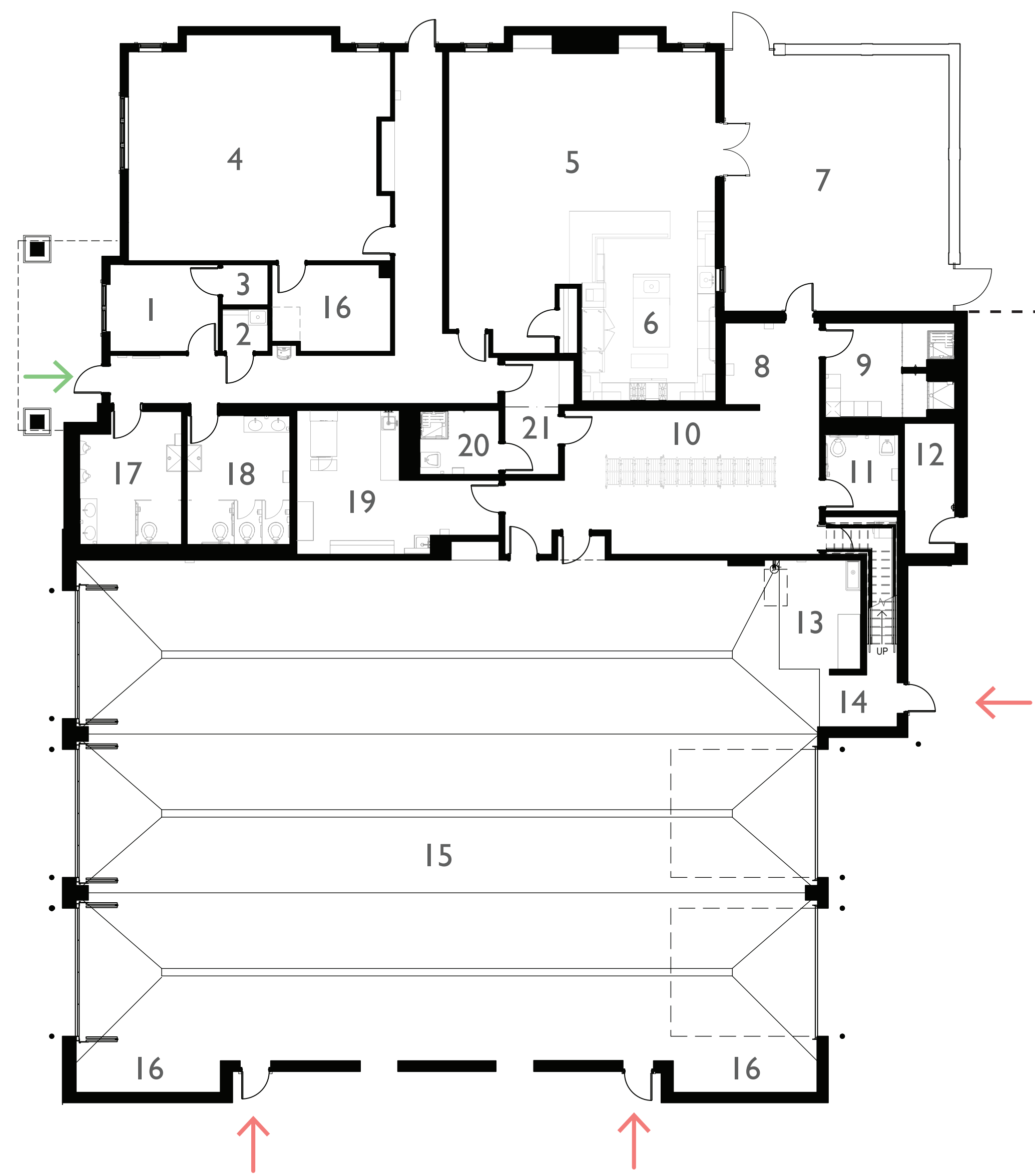
PROJECT NAME: CENTRAL ISLIP FIRE DEPARTMENT NEW STATION 3
AGENCY TYPE: VOLUNTEER
DEPARTMENT: CENTRAL ISLIP FIRE DEPARTMENT
LOCATION: CENTRAL ISLIP, NY
COMPLETED: JULY 2025
SQUARE FOOTAGE: 11,109 GSF
SITE SIZE: 89,051 SQ. FT.
TOTAL COST: \$6.9 MILLION





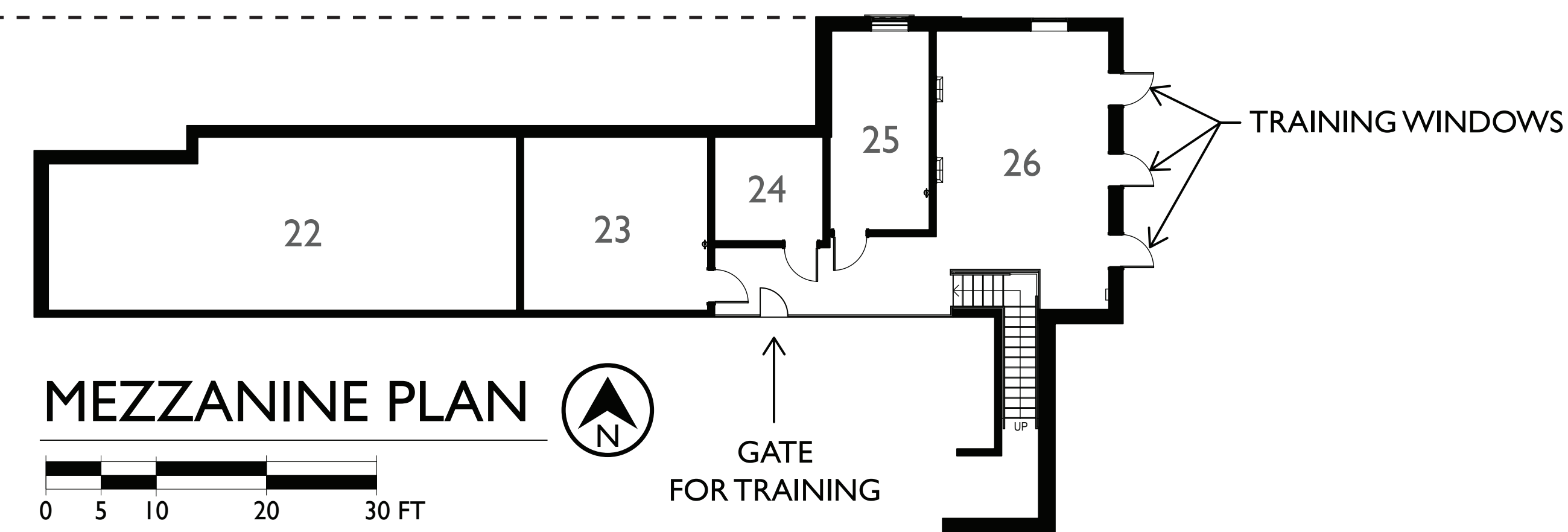
SITE PLAN

0 20 40 60 80 100 FT



FIRST FLOOR PLAN

0 5 10 20 30 FT



MEZZANINE PLAN

0 5 10 20 30 FT

LEGEND

- 1 - OFFICE
- 2 - JANITOR CLOSET
- 3 - CLOSET
- 4 - TRAINING ROOM
- 5 - READY ROOM
- 6 - KITCHEN
- 7 - OUTDOOR PATIO AREA
- 8 - SCBA
- 9 - DECON SHOWER
- 10 - GEAR AREA
- 11 - TOILET
- 12 - UTILITY
- 13 - WORK AREA
- 14 - STAIR AND ENTRY
- 15 - APPARATUS ROOM
- 16 - STORAGE
- 17 - MEN'S TOILET
- 18 - WOMEN'S TOILET
- 19 - LAUNDRY
- 20 - SHOWER
- 21 - TRANSITION VESTIBULE

- 22 - ATTIC (NOT ACCESSIBLE)
- 23 - ELECTRICAL CLOSET
- 24 - IT
- 25 - MECHANICAL CLOSET
- 26 - TRAINING MEZZANINE

SYMBOL LEGEND

- RESPONDER ENTRY
- PUBLIC ENTRY

To meet the demands of a growing population and expanding service area, approximately 20 years ago the Central Islip Volunteer Fire Department embarked on a mission to enhance emergency response capabilities through the development of a new substation. This location was strategically selected due to its proximity to the volunteer membership, allowing for safer response and access to equipment and apparatus.

In 2018, the District brought on H2M architects + engineers to bring the vision to life. H2M worked closely with the Fire District and the Town of Islip to develop and gain approval for a significantly expanded design. The proposed footprint was larger than previously conceived, requiring extensive coordination, presentations, and advocacy to demonstrate the operational necessity of the updated plan.

The final design is a state-of-the-art, three-bay substation totaling just over 11,000 square feet. It features two drive-through bays, and a mezzanine level that supports utility systems and advanced training capabilities. The facility includes an indoor training classroom, eliminating the need for off-site instruction, and incorporates training bailout windows and tie offs for suspended simulations both indoor and outdoor.

A key design priority was to eliminate cross-contamination risks, with a focus on making firefighter safety paramount. Decontamination showers are directly accessible from the gear area in a dedicated room adjacent to the truck bays. The building also includes a ready room and kitchen that open to an exterior patio, promoting health and well-being, as well as focusing on comradery, recruitment, and retention.